

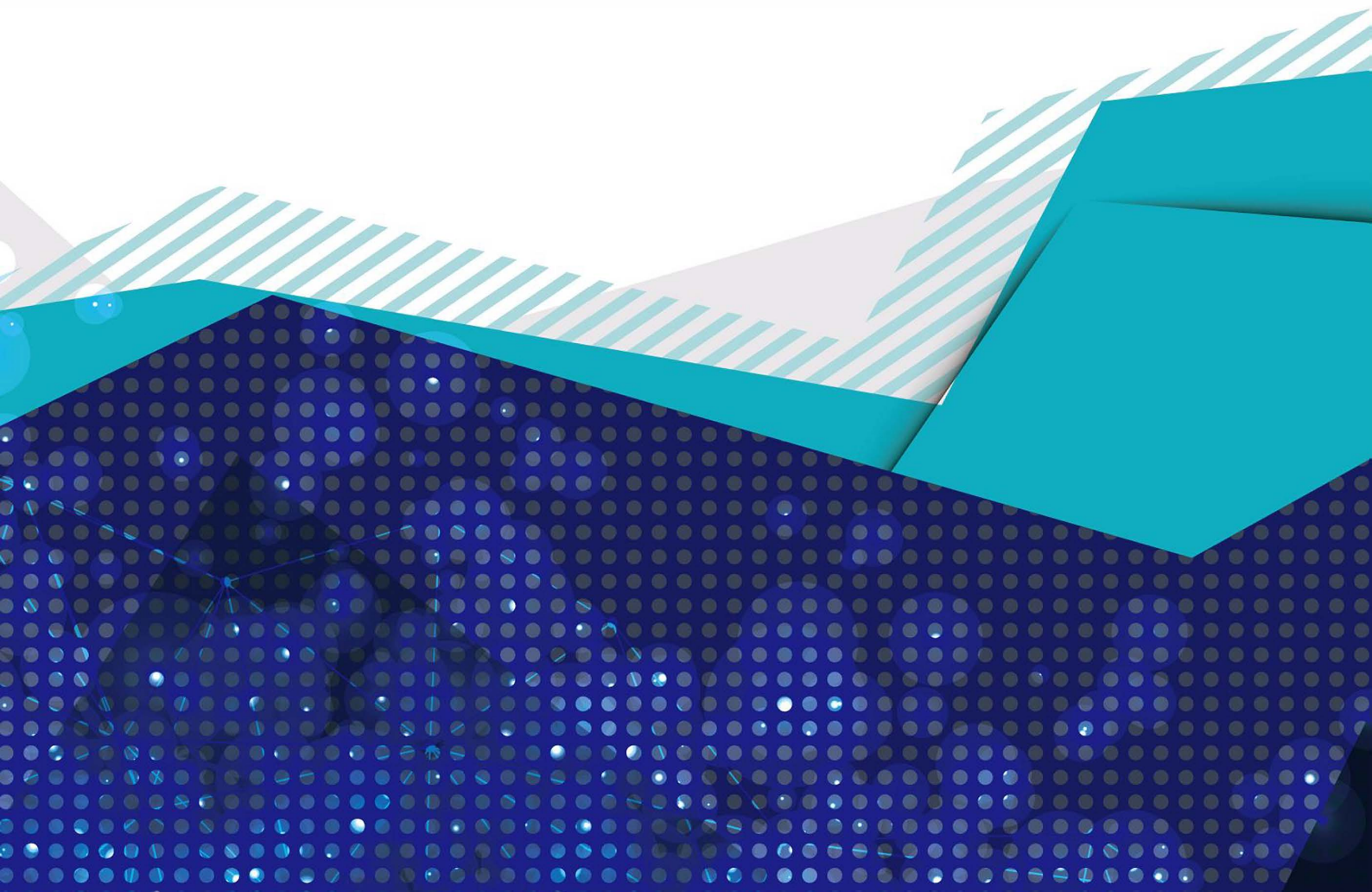


香港螺絲業協會  
Hong Kong Screw &  
Fastener Council

[www.hksfcsdf.com](http://www.hksfcsdf.com) | [www.hk-sfc.org.hk](http://www.hk-sfc.org.hk)

# HONG KONG

## Schraube & Verschluss Branchenverzeichnis



# Hong Kong Screw and Fastener Council

Hong Kong Screw and Fastener Council (HKSFC) wurde gegründet im Jahr 2003 mit dem Ziel, die Förderung der Entwicklung von Schrauben- und Schraubenherstellern und Händler in Hong Kong, um den gegenseitigen Austausch zu erleichtern und Zusammenarbeit, Förderung des Konzepts von fairem Handel und fairem Wettbewerb.

HKSFC fungiert als Kommunikationskanal zwischen Regierung und Industrie zur Förderung und Verbesserung der Status und Image der Schraubenherstellung innerhalb der Gesellschaft. HKSFC untersucht auch die neuesten Probleme und Technologie im Zusammenhang mit der Schraubenindustrie, halten die Vor allem die Ratsmitglieder sind auf dem Laufenden Änderungen der Branchenregeln und -vorschriften.

Im Laufe der Jahre hat die HKSFC enge Beziehungen zu Schrauben und Befestigen Unternehmen und Organisationen über verschiedene Regionen in Asien, USA, Europa und dem Rest der Welt. Die HKSFC arbeitet mit Instituten und Verbänden zusammen aus Korea, Japan, Taiwan und China, um "The Five Regions Fastener Association Conference".



香港螺絲業協會  
**Hong Kong Screw &  
Fastener Council**

## Kontaktiere Uns

E-mail :            hksfc@hk-sfc.org.hk  
                         hksfc2015@gmail.com

Tel :                (852) 2389 1993  
Fax :                (852) 2389 0803

Adresse :           Flat B, 25/F, Capital Trade Center  
                         62 Tsun Yip Street, Kwun Tong,  
                         Kowloon, Hong Kong.

Webseite :        <http://www.hk-sfc.org.hk>  
                         <http://www.hksfcsdf.com/en/contact-us>



# Service Bereich

- Vertretung der Branche, um Meinungen zu reflektieren und zu machen Empfehlungen an die Regierung
- Einrichtung freundlicher und kooperativer Mechanismen mit Zwangs- und Auslandsschraubenindustriegruppen / -institutionen an Förderung des Wirtschafts-, Technologie- und Talentaustauschs zwischen Mitglieder / Unternehmen
- Organisieren Sie verschiedene Aktivitäten, einschließlich Ausstellungen, Seminare, Ausbildung, Auslandsstudium, fachlicher Austausch usw. zu organisierengemeinsame Forschungs- und Entwicklungsprojekte für neue Materialien, Neue Technologien und neue Produkte in der Branche fördern die Entwicklung der Schraubenindustrie
- Bereitstellung einer Plattform für den Informationsaustausch in der Branche und sammeln Rohstoffe, neue Technologien, Marktbedingungen und relevante Brancheninformationen für Mitglieder
- Patentanmeldungsdienste und damit verbundene technische Dienstleistungen erbringen Unterstützung für seine Mitglieder
- Organisieren Sie Mitgliedervernetzungsveranstaltungen, um die gegenseitige Unterstützung zu verbessern Einheit und Freundschaft
- Bereitstellung von Beratungsdiensten für die Industrie

# Verzeichnisliste 2019

Unternehmen in der Lieferkette von Hong Kong Screw and Verbindungsindustrie sind in alphabetischer Reihenfolge aufgeführt, einschließlich:

- Hersteller von Schrauben und Befestigungsteilen
- Lieferant von Schrauben- und Befestigungsmaschinen
- Anbieter von Schrauben- und Befestigungsmaterial
- Dienstleister für Schrauben- und Befestigungsberatung

**ADVANCE TECHNICAL PRODUCTS LTD.**

Service Area: Material supplier in metal wire, copper, brass and bronze, plastic  
[www.atpcompany.com](http://www.atpcompany.com)

**AMADA INTERNATION TRADING (SHENZHEN) CO., LTD.**

Service Area: Metal processing machinery, manufacture, inspection  
[www.amada.com.cn](http://www.amada.com.cn)

**AMC LIMITED**

Service Area: Curtain wall fabrication and metal coating applicator  
[www.amclhk.com.hk](http://www.amclhk.com.hk)

**APEXRANK INDUSTRIES LTD**

Service Area: Die-casting and processing zinc-aluminum alloy parts, automotive parts, home appliance parts, toys, aluminum heat sinks  
[www.apexrank.com.hk](http://www.apexrank.com.hk)

**Atotech Asia Pacific Ltd ·**

Service Area: Screws, lathe parts, axles, pot nails, nuts  
[www.atotech.com.hk](http://www.atotech.com.hk)  
2722 0108  
[kay.tam@atotech.com](mailto:kay.tam@atotech.com)  
[stella.chan@atotech.com](mailto:stella.chan@atotech.com)

**BEAVER INDUSTRIAL CO. LTD.**

Service Area: Metal, electronic products, electrical parts and accessories  
[www.beaver.com.hk](http://www.beaver.com.hk)

**BEST DEVELOP METAL WORK FACTORY LTD.**

Service Area: Clothing accessories, metal buckles, metal buttons  
<http://www.hzlk-metal.com>

**BEST IDEAL LIMITED**

Service Area: Spot welding, arc welding, riveting, tapping, spray-painting, powder coating, silk-screening and second-level assembly.  
<http://www.bestideal.com>

**BICO PRECISION LIMITED**

Service Area: Metal stamping, mold manufacturing  
<http://www.bcp.com.hk>

**BIU CHUN WATCH HANDS & PARTS MANUFACTURERS LTD.**

Service Area: Diamond cut watch hands, clock hands and parts  
<http://www.biuchun.com>

**BOLLINK HOPLEE CO., LIMITED**

Service Area: Steel coil sales and processing, slitting, cutting board  
[www.kghoplee.com.hk](http://www.kghoplee.com.hk)

**BOLY METAL MANUFACTORY LTD**

Service Area: CNC turning horizontal milling, automatic screw machining stamping, surface grinding thread rolling, inner / outer grinding ultrasonic cleaning  
<http://www.boly.com.hk>

**BROADWAY HARDWARE LTD**

Service Area: Quality metal parts for household appliances, including Plasma TVs, LCDs, DVD players, speakers, microwaves and kitchen goods.  
www.bhl.com.hk

**Cathay Tat Ming Metal Mfy., Ltd.**

Service Area: Screws and Fasteners  
www.cathayatming.com  
2342 1294  
kenneth@cathayatming.com

**CHEUNG KEE METAL CO. LTD.**

Service Area: Steel, tin (including tinplate / tinplate / chrome-plated iron)  
http://www.ckmetal.com

**CHI SING METAL MANUFACTORY COMPANY LIMITED**

Service Area: Scooters, metal kitchen utensils, plastic kitchen utensils, metal housewares, plastic household products, panels and handles for electronics  
www.chising.com.hk

**China Fastener Info**

Service Area: Screws, automatic lathe products, hardware products  
www.chinaFastenerinfo.com  
www.chinaFastenerinfo.net  
info@jzzfastener.net

**ChinaFastener Information & Tech. Co., Ltd.**

Service Area: Retaining ring, snap ring, washer, elastic fastener, combination screw, multi-position screw  
www.luosi.com  
www.ChinaFastener.com  
110@luosi.com

**Carlo Salvi (Guangzhou) Machinery And Equipment Ltd.**

Service Area: Screws, lathe parts, axles, pot nails, nuts  
http://www.carlosalvi.com  
info.china@carlosalvi.com

**CHAMPION MACHINE TOOLS (HONG KONG) CO. LTD.**

Service Area: Metalworking machinery, screw machine, injection molding machine, machine tool, milling machine, mould  
http://www.champion.com.cn

**CHEUNG'S INDUSTRIAL MANUFACTORY LTD.**

Service Area: Quarter turn latches, cam locks, paddle handles, brackets & door holders, drawer locks, drawer slides & hinges  
http://www.ciocean.com

**China Crystal Metalware Ltd.**

Service Area: Screw, automatic lathe  
2781 2283  
chinacrystal\_38@yahoo.com.hk

**CHINA SUK LTD**

Service Area: Cold pier forming oil, CNC cutting oil (liquid), strong beam oil, screw head oil, anti-rust oil, cleaning agent  
www.chinasuk.com  
chinasuk@chinasuk.com

**CHING MING ALUMINIUM DIE CASTING MFY LTD**

Service Area: Precision die casting and metal machining  
www.chingming.com.hk



**CHIT SHUN MACHINERY LTD.**

Service Area: Die casting and injection molding equipment design, manufacturing and service provider  
<http://www.chit-shun.com.hk>

**Chun Shing Trading Co., (HK) Ltd.**

Service Area: Hardware, electronics, toys, optics, household goods  
[www.chun-shing.com](http://www.chun-shing.com)  
852-2795 7899  
[pftsui@chun-shing.com.hk](mailto:pftsui@chun-shing.com.hk)

**Chun Yu (Dongguan) Metal Products Co Ltd**

Service Area: Standard and non-standard stainless steel, aluminum, copper, iron screws, service range: toys, electronics, home appliances, audio, automotive  
[www.chunyu.com.cn](http://www.chunyu.com.cn)

**CJ TOOLING & ENGINEERING CO., LTD**

Service Area: Tool & die makers and die designers  
[www.cjte.com.hk](http://www.cjte.com.hk)

**COMPOMAX TECHNOLOGY LTD**

Service Area: Metal, engineering plastic, and engineering ceramic products  
[www.compomax.com.hk](http://www.compomax.com.hk)

**Dongguan Kelee Wire & Technologies CO.,Ltd.**

Service Area: Fastener, spring, metal accessories, die-casting, Shaft, CNC milling machine, eletroplating & powder-coating  
[www.kelee-china.com](http://www.kelee-china.com)  
[ywb@kelee-china.com](mailto:ywb@kelee-china.com)

**DONGGUAN QINGXI KWONG WAH LOCK MANUFACTORY CO., LTD.**

Service Area: Precision Pins, production , automated broaching, computerized key bitting, hot forging, electroplating, etc.  
[www.kwlocks.com](http://www.kwlocks.com)

**DONGGUAN YUK KWONG TECHNOLOGY (HK) CO LTD.**

Service Area: Electronic Components, electrical applicanes  
<http://www.chunkwong.com.hk>

**DONGLONG METAL MOLD MACHINERY CO. LTD**

Service Area: Screws, rivets, stainless steel wire, special metal and machinery  
[www.gd-donglong.com](http://www.gd-donglong.com)  
[moju@gd-donglong.com](mailto:moju@gd-donglong.com)

**Eagle Metalware Co Ltd.**

Service Area: Toys, electronics, household appliances, furniture, decoration  
[www.eaglemetalware.com](http://www.eaglemetalware.com)  
2493 8151-3 / 2493 3420  
[chow3288@fookshingltd.imsbiz.com.hk](mailto:chow3288@fookshingltd.imsbiz.com.hk)  
[egmcks@me.com](mailto:egmcks@me.com)

**EAGLE TRADING (FAR EAST) LTD.**

Service Area: Screws and fasteners  
<http://www.eagle-screw.com>

**EASTPO (HOLDINGS) LTD**

Service Area: Metal accessories wholesale and processing  
[www.eastpo.com](http://www.eastpo.com)



**Essence Screws Industries Ltd.**

Service Area: Screw  
2786 0232  
ck.essindco@on-nets.com

**FAIRIC-TECH METAL WORKS  
MANUFACTURING LTD.**

Service Area: Business card holder, metal case, panel and handle for electronic products, electronic parts for electronic products  
www.fairic.com

**FH TECHNICAL SOLUTION (HONG KONG)  
LTD.**

Service Area: Wheelchairs, small metal parts, die-cast parts, automotive parts, connectors, electronic switch buttons, connectors  
http://www.fh-tech.com

**FINETECH SYSTEM (HK) LIMITED**

Service Area: Sheet metal fabrication , automatic material-feeding/off loading equipment  
www.goltechsys.com

**Foshan Nanhai Qiao Yi Co., Ltd ·**

Service Area: Copper and aluminum products: copper sheet/plate, brass wire, extruded copper, extruded aluminum  
www.qiaoyigd.com  
qiaoxing2007@163.com

**GLORIA ISLAND LTD.**

Service Area: Food mixer, metal processing machinery, watt carton making machine, sealing machine, metal mold, plastic mold, electronic metal parts  
www.gloriaisland.com.hk

**EVA PRECISION INDUSTRIAL HOLDINGS  
LIMITED**

Service Area: Automation equipment manufacturing and machine assembly, automotive mold and parts manufacturing  
http://www.eva-group.com

**Fastener Manufacturer H K Ltd.**

Service Area: Screw  
2557 2288  
hitechf@netvigator.com

**FILLMARKS METAL TECHNOLOGY COMPANY  
LIMITED**

Service Area: LED light, tube, module  
www.meproducts.com.hk

**FORSTEPPE ASIA LTD.**

Service Area: Manufacturing of machinery parts, high precision machine parts, custom-made mold and die parts, e.g. carbide punches and dies  
http://www.forsteppe.com

**FRAMEWAY INDUSTRIES LTD.**

Service Area: Metal stamping and dies making, manufacturer of ceiling fans and lightings  
http://www.frameway.com

**Go Star Precision Company Limited**

Service Area: Brass, brass wire, brass plate, stainless steel wire, zinc alloy, aluminum alloy, magnesium alloy  
www.gostar.com.hk  
2432 7281  
wm.lee@gostar.com.hk

**GOA International Limited**

Service Area: Precision Metal accessories in household products, fiber optic equipment and optoelectronic display materials  
www.goaltd.com.hk  
2415 4917  
info\_goa@goaltd.com.hk  
chris@goaltd.com.hk

**GOOD PROFIT HEAT TREATMENT (CHINA) CO. LTD.**

Service Area: Mould and die supporting industry, provide heat treatment service  
<http://www.gpht-hk.com>

**Grande Metalware Company Limited**

Service Area: Additive (special for auto parts plating)  
2857 5456

**Guo Ji Chemical Ltd**

Service Area: Precision metal accessories, connectors, auto parts, medical accessories, optical products  
www.guoji.com.hk  
2389 1168  
lucille.so@guoji.com.hk  
terry.ho@guoji.com.hk

**Hang Yu Metal Manufactory Limited**

Service Area: Stainless steel screws, snails, washers, screws, screws, etc.  
<http://www.hkyjmetal.com>  
2467 2820  
xingmao2007@biznetvigator.com  
yjmetal@126.com

**HEIDENHAIN LTD**

Service Area: Production and processing of electronic components  
www.heidenhain.de

**GOLDEN SUN HOME PRODUCTS LTD.**

Service Area: Stainless steel and plastic houseware production  
<http://www.goldensun.com.hk>

**GOODWAY PARTS MANUFACTURING CO. LTD**

Service Area: Case hardware, cabinet hardware, crating, raching, cables & connectors, LED lighting, penn stage, computer holders  
www.penn-elcom.com

**Guang Zhou Fast Hardware Co., Ltd.**

Service Area: Screws, stampings, lathe parts, and other metal accessories, mainly for: home appliances, automobiles, toys and consumer electronics  
<http://www.fstwj.cn/>  
2853575003@qq.ocm

**HANG FAT HABERDASHERY LIMITED**

Service Area: Metal button  
<http://www.hangfat8.com>

**Hebei Chaoyue Standard Fastener Mould Limited Company**

Service Area: Lubricants, petrochemical products  
www.hbcymj.com  
hbcymj@163.com

**HENG WANG METALS (H.K.) CO. LTD**

Service Area: Home appliance steel  
www.hengwang.com.hk

**HINASIA (HONG KONG) INDUSTRIAL CO. LTD.**

Service Area: Filter Pump Equipment, Electro-plating Chemical Materials, Special Drill, HSE End Mill  
<http://www.hinasia.com>

**Hip Hing Screw Industrial Co., Ltd.**

Service Area: Pin, pivets, springs, nuts, special fasteners, self tapping screw, hooks, sockets cap screw, stamping, lathed parts  
[www.hiphingscrew.com](http://www.hiphingscrew.com)  
[www.oemmf.com](http://www.oemmf.com)  
2896 6191  
[hh@hiphingscrew.com](mailto:hh@hiphingscrew.com)

**HISHINUMA (HONG KONG) LTD**

Service Area: Die casting machine and peripheral equipment, mold design software  
[www.hishinuma.co.jp](http://www.hishinuma.co.jp)

**HOIDAN COMPANY LTD**

Service Area: PEM fasteners, accuride slides, speed rivets, bumper specialties, recoils and metal chassis related fastening products  
[www.hoidan.com](http://www.hoidan.com)

**HUNG FUNG METAL**

Service Area: Decorative door lock, space aluminum lock, stainless steel lock, fire door lock, hotel magnetic card lock, glass door lock, floor spring, door closer  
<http://www.hungfung-metal.com>

**I - FUTURE INTERNATIONAL ENTERPRISE LTD**

Service Area: Textiles, toys, electronics and packaging  
[www.i-future.com.hk](http://www.i-future.com.hk)

**HIP FAI INDUSTRIAL LTD**

Service Area: Making precision stamping molds and metal parts manufacturer  
[www.hipfai.com.hk](http://www.hipfai.com.hk)

**HIP YICK INDUSTRIAL CO. LTD.**

Service Area: Metal accessories (stamping parts, handles)  
<http://www.hipyick-hk.com>

**HOI LUNG METAL PRODUCTS FACTORY LTD.**

Service Area: Magnetic head, electronic product metal parts  
<http://www.hoilung.com>

**HOP CHEONG METAL PRODUCT FACTORY LTD.**

Service Area: Metal chassis, web cabinet, plating & welding part, lathe parts, metal parts, anodine parts  
<http://www.hopcheong.com>

**Hung Kee Metal Stamping Factory**

Service Area: Metal accessories

3708 4406 / 6200 4258  
[Carmen@hungkeemgp.com.hk](mailto:Carmen@hungkeemgp.com.hk)  
[info@hungkeemetalfty.com.hk](mailto:info@hungkeemetalfty.com.hk)

**IMC CHEMICALS & ENGINEERING (HONG KONG) LTD.**

Service Area: Electrophoresis and electroplating materials, additives  
<http://www.imcchem.com>



**INNOTECH ADVANCED PRODUCTS LIMITED**

Service Area: Metal stamping, plastic injection, mold design and fabrication, brush planting, silkscreening & padprinting, assembling  
<http://innotech-hk.com>

**J & P (HONG KONG) INDUSTRIAL LTD.**

Service Area: Metal toy parts, medical equipment, auto parts, home appliances (non-listed projects), electronic metal parts  
<http://www.jnp.com.hk>

**JECO PRECISION LIMITED**

Service Area: Electric and electronic machinery, metal processing machinery, machinery parts (carousel, turntable), lathe, mould  
[www.jeco.hk](http://www.jeco.hk)

**Jinyuanda Electromechanical(International) Co.,Ltd.**

Service Area: Electroplating Chemistry/Zinc Flake  
[www.dg-jyd.com](http://www.dg-jyd.com)  
3174 7646  
[szjydwj@126.com](mailto:szjydwj@126.com)

**KAI MAN INDUSTRIAL (GROUP) LIMITED**

Service Area: Provide different kinds of electroplating chemicals; such as pre-treatment, general plating and precious metal plating  
<http://dillenberg.com.hk>

**KAM YUEN ORNAMENT MFG. CO. LTD.**

Service Area: Jewelry  
[www.kamyuenmfg.com.hk](http://www.kamyuenmfg.com.hk)

**ITE Ebseek Exhibitions Company Ltd.**

Service Area: Screw image screening machine  
[www.ite-exhibitions.com](http://www.ite-exhibitions.com)  
3423 4608  
[herry.meng@ite-asia.com](mailto:herry.meng@ite-asia.com)

**Jan Cheong Sing Hardware**

Service Area: Metal stamping, bearing, assembly, injection molding  
[www.jcs3.com](http://www.jcs3.com)  
2362 8618  
[jancheongsing@yahoo.com.hk](mailto:jancheongsing@yahoo.com.hk)

**JIN JUE(H.K.) INDUSTRIAL CO., LIMITED**

Service Area: Metal stamping, mold manufacturing, metal accessories  
<http://www.jinjuesy.com>

**KA SHUI INTERNATIONAL HOLDINGS LTD.**

Service Area: Lightweight, ultra-thin Mg-RE laptop casing, magnesium alloy products, graphene composite coating  
<http://www.kashui.com>

**KAM YUEN ENTERPRISE TRADING LTD**

Service Area: Manufacturer of aluminium extrusion  
[www.kytrade.com.hk](http://www.kytrade.com.hk)

**KARMO (APOLLO) GROUP LTD**

Service Area: Apollo robot for injection molding machines, downstream work cell and factory automation  
[www.karmo.com.hk](http://www.karmo.com.hk)

**KARRIE INTERNATIONAL HOLDINGS LTD.**

Service Area: Metal stamping, plastic injection and parts manufacturing services  
[www.karrie.com](http://www.karrie.com)

**KING SHING PRECISION (SHEN ZHEN) CO. LIMITED**

Service Area: Metal accessories  
[www.kingshing.net](http://www.kingshing.net)

**KING SIU METAL PRODUCT FACTORY LTD.**

Service Area: Production of export silver plated products, souvenirs  
<http://www.ks.com.hk>

**KING WAI DIE-CASTING MANUFACTURING LTD.**

Service Area: Die casting various types of alloy parts trademark key chain belt buckle, model photo frame jewelry box and various types of gifts  
[www.kingwaimetal.com](http://www.kingwaimetal.com)

**KINGDOM FINE METAL LTD**

Service Area: Advanced precision metal engineering solution provider, metal stamping, cutting, machining, lathing and turning procedures  
[www.kingdom.com.hk](http://www.kingdom.com.hk)

**Koara Metal Company Limited**

Service Area: Screw mold, machinery  
[www.dg-jyd.com](http://www.dg-jyd.com)  
6917 9877 / 6917 8577  
[koara@302hq.com](mailto:koara@302hq.com)

**KONG NGAI PRECISION STAMPING TOOL (HONG KONG) PRODUCTION F.T.Y.**

Service Area: Metal mold design, stamping  
<http://www.kongngai-hk.com>

**KONSTAR INDUSTRIES LTD.**

Service Area: Food processor manufacturer (kitchen accessories and household products)  
<http://www.konstar.com.hk>

**KOWLOON INTERNATIONAL INDUSTRIES CO., LTD.**

Service Area: Metal spring  
[www.kcindustries.com.cn](http://www.kcindustries.com.cn)

**Kui Yuen Screw & Metal Co.**

Service Area: Fasteners - Toys/ Home appliances / Electronic appliances / Audio equipment / Furniture / Bicycle, Materials we use: (Mild Steel / SUS / Al / CU / Ti)  
[www.kuiyuen.com](http://www.kuiyuen.com)  
2357 4064  
[karenhau@kuiyuen.com](mailto:karenhau@kuiyuen.com)

**Kuiloon Group Limited**

Service Area: Stainless steel wire / bar, stainless steel coil / sheet  
[www.kuiloon.com](http://www.kuiloon.com)  
[www.meigs.com.cn](http://www.meigs.com.cn)  
[sales@kuiloon.com](mailto:sales@kuiloon.com) / [jennifer@kuiloon.com](mailto:jennifer@kuiloon.com)

**Kwok Tai Screws Manufactory Limited**

Service Area: Chemical nickel, hanging zinc, rolling zinc, rolled nickel, rolled copper, stainless steel passivation / electrolytic polishing, screw machinery, stamping  
[www.kwoktai.com](http://www.kwoktai.com)  
2493 9193  
[info@kwoktai.com](mailto:info@kwoktai.com)

**KWONG LEE (ASIA) METAL COMPANY LIMITED**

Service Area: Special materials such as Japan NGK bismuth copper, Mitsubishi materials, non-ferrous metals include brass, beryllium copper, copper, stainless steel  
[www.galajet.com.hk](http://www.galajet.com.hk)

**LAP KEUNG PRECISION INDUSTRIAL COMPANY LTD**

Service Area: Manufactory of precision metal parts and watch related accessories.  
<http://www.lapkeung.com>

**Leader Screws Manufacturing Company Limited**

Service Area: Automated design manufacturer  
[www.leaderscrews.cn](http://www.leaderscrews.cn)  
2425 6788 / 24256050  
[choi\\_ld@leaderscrews.cn](mailto:choi_ld@leaderscrews.cn)

**LEE KEE GROUP**

Service Area: Solutions provider for metals, offers a broad portfolio of quality metals and electroplating chemicals  
<http://www.leekeegroup.com>

**LEPACK CO. (1955) LTD.**

Service Area: CNC metal processing machinery and related sophisticated equipment  
<http://www.lepack.com.hk>

**LI WAI METAL MANUFACTORY LTD.**

Service Area: Metal trims/accessories  
- jeans button, shank buttons, snaps button, 2/4 holes button, rivets, buckles, belt  
[www.liwaimetal.com](http://www.liwaimetal.com)

**L.K. MACHINERY INTERNATIONAL. LTD.**

Service Area: Design, manufacture and sale of die casting machines, plastic injection molding machines & CNC machining centers  
[www.lktechnology.com](http://www.lktechnology.com)

**Le Da Metal Co.**

Service Area: Sorting inspection machine  
[www.ledametal.com](http://www.ledametal.com)  
[linzhiming@ledametal.com](mailto:linzhiming@ledametal.com)

**Lee Fung Metal Products Factory Limited**

Service Area: Machines screws, tapping screws (flat end/sharp end), taptite screws, rivets, shafts, set screws  
[www.leefungscREW.com](http://www.leefungscREW.com)  
2790 4160  
[sales@leefungscREW.com](mailto:sales@leefungscREW.com)  
[kmcheung@leefungscREW.com](mailto:kmcheung@leefungscREW.com)

**LEE TACK STATIONERY MANUFACTORY LTD.**

Service Area: Hardware plastic stationery  
[www.leetack.com](http://www.leetack.com)

**LEUNG CHI MACHINE FACTORY**

Service Area: Manufacturing hydraulic sheet metal processing machinery  
<http://www.leungchi.com>

**LOXCA INDUSTRIES LTD.**

Service Area: Precision metal accessories manufacturer  
<http://loxca.com.hk/>



**LUK'S BUTTON INDUSTRIAL LTD**

Service Area: Clothing accessories, plastic buckle, metal buttons, plastic buttons, viewing holes, rivets  
<http://www.luksbrobutton.com.hk>

**LUNG KEE METAL LTD.**

Service Area: Mold base, steel, copper, brass and bronze  
<http://www.lkm.com.cn>

**Marvel Metal Technology Company Limited**

Service Area: Screw  
[www.marvel-hk.com](http://www.marvel-hk.com)  
3990 1155  
[andrew@marvel-hk.com](mailto:andrew@marvel-hk.com)  
[sales@marvel-hk.com](mailto:sales@marvel-hk.com)

**MASFORT (HK) TRADING CO, LTD**

Service Area: Cutting tools  
[www.masfort.com.cn](http://www.masfort.com.cn)

**MEITON LTD.**

Service Area: NTK cutting tools, NGK beryllium copper block/strip/ceramics tools, metal products, etc.  
<http://www.meiton.com.hk>

**METRO BEARING & AUTOMOTIVE LTD.**

Service Area: Metal springs, auto parts, auto parts, metal wheel decoration, bearings  
<http://www.papas-mba.com>

**MILLICO METAL STAMPING LIMITED**

Service Area: Metal tooling production (sheet metal products, heat sink products, stamping metal part)  
<http://www.millicometal.com>

**MING SHING DIE-CASTING MACHINE FACTORY**

Service Area: Precision manufacturing of die casting machines, refining cold, hot chamber die casting machines and providing die casting technology services  
<http://www.mingshing.com.cn>

**MING'S & COMPANY**

Service Area: Automatic labeling system from CNC machine. Such as pushes, bars, watch crowns, screw bars, springs, bar tool for watch parts etc.  
<http://www.ming.com.hk>

**NA BOB PRECISION METAL INDUSTRY LTD.**

Service Area: Metal stamping, CNC, tooling, plating & finishing, assembly & packing, QC, metal demos  
<http://www.nabobind.com>

**NEW UNIVERSAL PLASTIC & METALWARE MFY. LTD.**

Service Area: Plastic and metalware manufacturer including wide range of household, and stationery products  
[www.newuniversal.com](http://www.newuniversal.com)

**NEW WAY CO.**

Service Area: Supplier of motor and stamping equipments  
<http://www.nw.com.hk>

**NGAI FUNG METALWARE CO LTD**

Service Area: Producing micro parts such as contact plate, springs, shields and also services of tooling design, fabrication, processing and fixture for her own production  
[www.ngaifung.hk](http://www.ngaifung.hk)

**NIPPON STEEL & SUMIKIN BUSSAN (HK) CO., LTD**

Service Area: Construction Machinery, Metal Processing Machinery, Generator, Steel, Non-Ferrous and Non-Ferrous Metal Building Materials  
<http://www.nst-china.com>

**ORIENTAL MACHINE TOOL CO. LTD.**

Service Area: Machining center, composite CNC lathe, EDM wire cutting machine, CNC boring and milling center, punching machine, etc.  
[www.omtcl.com.hk](http://www.omtcl.com.hk)

**Pak Tak Trading Co Ltd.**

Service Area: Italy SALA silk plate, punch needle, punch rod, sleeve, high quality thread rolling wheel, wire tapping, trimming die  
2545 2107  
[phlandpt@biznetvigator.com](mailto:phlandpt@biznetvigator.com)

**POLYWELL MACHINERY LTD.**

Service Area: Agency machinery business  
<http://www.polywell.hk>

**PRECISION METAL WORKS LTD.**

Service Area: Fasteners, small metal parts (including automotive, machinery, medical, food), automotive parts, electronic components, electronic parts, metal parts  
<http://www.precisionmetalltd.com>

**Nic Cheung Metal Factory**

Service Area: Spheroidized annealed wires and high quality products such as automobiles, steel structures, electronics, home appliances, furniture screws and nuts  
[13922519800@139.com](mailto:13922519800@139.com)

**OCEAN SPRING & METAL MANUFACTURING LTD.**

Service Area: Precision spring, metal stamping, progressive mould manufacturing and parts assembly  
<http://www.oceanspring.com.hk>

**Pacific Sky Enterprises Limited**

Service Area: Standard parts punch die and hardware parts, cargo import and export, technology import and export  
[www.screw.com.cn](http://www.screw.com.cn)  
2897 7548  
[miho@screw.com.cn](mailto:miho@screw.com.cn)

**PARIS METAL MANUFACTORY LTD.**

Service Area: Electronic product metal parts  
<http://www.pmmml.com.hk>

**PRECISE METAL PARTS COMPANY**

Service Area: Precision metal parts manufacturing  
[www.preciseparts.com.hk](http://www.preciseparts.com.hk)

**PRO-FIT INDUSTRIAL CO. LTD.**

Service Area: Stainless steel kitchen utensils, stoves and catering equipment  
[www.profitind.com](http://www.profitind.com)

**PROMOTIVE INDUSTRIAL CO. LTD.**

Service Area: Electronic switches and power switches. Making precision die/mould of metal parts and plastic parts  
<http://www.pic.com.hk>

**RAINBOW PRECISION METAL LTD**

Service Area: Metal spring, wire forming, metal stamping  
<http://www.kowloonspring.com.hk>

**Sam Chang Machinery Industrial**

Service Area: Screw wire, rivet wire, car axis, alloy steel wire such as 10B21 / SCM435, screws, etc.  
[www.sam-chang.com](http://www.sam-chang.com)  
2795 2138  
[paul@sam-chang.com](mailto:paul@sam-chang.com)

**SANA INDUSTRIES (CHINA) LTD.**

Service Area: Steel, metal template processing  
<http://www.sana.com.hk>

**Shanghai Prime Machinery Company Limited**

Service Area: Dacromet, Zinc Magnesium, Delken (DEL TA-MkS), Teflon (XyLan)  
[www.pmcsh.com](http://www.pmcsh.com)  
2525 3830  
[lynn.qi@pmcsh.com](mailto:lynn.qi@pmcsh.com)

**Shing Fat Screw & Metal Co Ltd**

Service Area: Stainless steel screw, stainless steel nut, flat washer optical influencer and its supporting equipment  
[www.sfscrew.com](http://www.sfscrew.com)  
2556 2757  
[sfat02@netvigator.com](mailto:sfat02@netvigator.com)

**Pro-Technic Machinery Ltd.**

Service Area: Grinding and polishing machinery and abrasives  
[www.protechnic.com.hk](http://www.protechnic.com.hk)  
2428 2727  
[main@protechnic.com.hk](mailto:main@protechnic.com.hk)

**RTC STEEL LTD.**

Service Area: Hard copper for dies and moulds, ground flat stock, bandsaw blade, flat & square steel, round steel  
[www.rtcsteel.com](http://www.rtcsteel.com)

**SAM TAT PRECISION SPRINGS MANUFACTURING CO. LTD.**

Service Area: Springs, shafts, wire formings  
<http://www.sam-tat.com>

**Shanghai Afastener Exhibition Co.,Ltd.**

Service Area: Lathe, stamping, die casting, axles, rivets, screws  
<http://www.Afastener.com>  
021@afastener.com

**Shantou Hongsheng Bolt Industrial Co.,Ltd.**

Service Area: Non-standard screws, electronic screws, car screws  
<https://hongshengbolt.1688.com/>  
[hongshengbolt@hotmail.com](mailto:hongshengbolt@hotmail.com)

**Shing Hing Industrial Limited**

Service Area: Barrel plating, environmentally friendly electroplating, nickel, etc.; mechanical electroplating, phosphating black  
[www.shinghinggroup.com](http://www.shinghinggroup.com)  
2896 0391  
[harvey.tsui@gmail.com](mailto:harvey.tsui@gmail.com)  
[info@shinghinggroup.com](mailto:info@shinghinggroup.com)



**SHUN SHING ORNAMENT  
MANUFACTURING LTD.**

Service Area: Clothing accessories, hair clips, metal jewellery, metal hair accessories  
<http://www.shunshingltd.com.hk>

**Siantar Metal Company Limited**

Service Area: Intelligent detection ERP equipment, intelligent detection selector ERP 2556 4221  
[cflim8878@gmail.com](mailto:cflim8878@gmail.com)

**SICHUAN YUANFANG HIGH-TECH  
EQUIPMENT PARTS CO., LTD**

Service Area: Smelting, forging, heat treatment, machining  
[www.china-yuanfang.com](http://www.china-yuanfang.com)

**SINO TECH MACHINERY (HK) LTD**

Service Area: High-speed precision automatic punching machine, robot equipment, automatic peripheral equipment and various types of standard metal mold parts  
[www.dgsino.com](http://www.dgsino.com)

**SINO UP ENTERPRISES LTD.**

Service Area: Mold design manufacture, the precise high speed continual ramming technology  
<http://www.sinoup.com.hk>

**STANDARD METAL SPRING MANUFACTORY LTD.**

Service Area: Cold-formed compression, torsion, and extension springs, multiform clips, precision shafts, wire forms and kitchen tools  
<http://www.std-metal.com>

**STRONG PRECISION MACHINERY**

Service Area: Producing precision machinery accessories and equipment parts (Medical components, sports, kickstarter, RC model)  
[www.sytung.com](http://www.sytung.com)

**SUN AH ELECTRIC FACTORY LTD.**

Service Area: All sorts of metal stamping parts, deep draw parts, metal cases, aluminum heat sinks, terminals, and insulation fiber plates  
<http://www.sunah.com.hk>

**SUN SHING STAINLESS STEEL & METAL CO. LTD.**

Service Area: Stainless steel processing center (coiling slitting, sheet form cutting, PE coating)  
[www.sun-shing.com](http://www.sun-shing.com)

**SUN YOUNG INDUSTRIAL COMPANY LIMITED**

Service Area: Metal stamping, design molds and manufacturing, assembly parts  
[www.sunyoung-dg.com](http://www.sunyoung-dg.com)

**SUNNEX PRODUCTS LTD.**

Service Area: Stainless steel family and hotel supplies, hardware, OEM stamping and deep drawing products, plastic card board, plastic hardware products  
<http://www.sunnex.com.hk>

**SUNNY METAL INDUSTRIAL CO. LTD.**

Service Area: Abrasives, Small Metal Parts, Hand Tools, Electronic Metal Parts  
<http://www.smihk.com>

**SUNNY METAL LIMITED**

Service Area: Metal coil sheets, copper scrap, stainless steel scrap, brass scrap, red copper scrap  
[www.sunnymetal.com.hk](http://www.sunnymetal.com.hk)

**SZE LOI HARDWARE MFY LTD**

Service Area: CNC Swiss-Turn Specialist (Mill & Turn, custom, irregular shape parts, miniature scale parts, high precision, low to mid volume production)  
[www.szelo.com](http://www.szelo.com)

**Tai Sun Metal Manufactory**

Service Area: Electrical Screw / SKC Light Pipe Tapping Screw Tool  
[www.taisunmf.com.hk](http://www.taisunmf.com.hk)  
2465 0177  
[taisunmf@163.com](mailto:taisunmf@163.com)

**TAI YAU METAL CO. LTD.**

Service Area: Aluminum sheet, color plated aluminum sheet, aluminum extrusion material, copper sheet, stainless steel sheet, protective adhesive paper  
<http://www.yp.com.hk/taiyaumetal>

**TAT HING METALS PLASTIC CO. LTD.**

Service Area: Metal frame and hinge for handbags, luggage tag, door hinge and buckle, letterbox lock, padlock, fasteners, packaging materials  
<http://www.jinmou.com.hk>

**Teo Cheow Seng (Hong Kong) Limited**

Service Area: Fasteners, bolts & nuts, iron wire, auto parts, lead & nickel, silver & platinum  
[www.cheowseng.com](http://www.cheowseng.com)  
2549 4196  
[henry@cheowseng.com](mailto:henry@cheowseng.com)  
[gigilee@cheowseng.com](mailto:gigilee@cheowseng.com)

**Superior Screws Manufacturers Ltd.**

Service Area: Automotive fasteners, construction, bridges, power stations, energy, railway fasteners, standard fasteners, aviation fasteners  
[www.superiorfastening.com](http://www.superiorfastening.com)  
2896 5255  
[jackylam@superiorfastening.com](mailto:jackylam@superiorfastening.com)

**TAI HING PLASTIC METAL LTD**

Service Area: Alloy charm, plastic hook, nylon coated j-hook and garter grip, plastic bones, nylon coated with metal wires, nylon cloth hook and eye, bow  
[www.taihingproducts.com.hk](http://www.taihingproducts.com.hk)

**TAI TUNG METAL MANUFACTORY LTD.**

Service Area: Metal toys, strollers, metal molds, electronic parts, metal parts  
[www.taitungmetal.com](http://www.taitungmetal.com)

**TAK KEUNG METAL FACTORY LTD.**

Service Area: Metal stamping forming, metal household tableware, Valet design products and accessories  
<http://www.takkeung.com>

**TECHCRYSTAL INDUSTRIES LTD.**

Service Area: Power tools, metal cases, panels & handles for electronics (product assembly), electronic metal parts, paints / coatings  
<http://www.techcrystal.com>

**TETLEY SPRINGS & METAL CO. LTD.**

Service Area: Metal spring  
<http://www.tetleysprings.com>

**THE KINETIC MACHINERY CO. LTD.**

Service Area: High-speed engraving and milling machine, CNC machining center, metal processing machinery  
<http://www.tkmhk.cn>

**TIN PING METAL PARTS LTD.**

Service Area: The company specializes in springs, lathes and stampings  
<http://www.tinpingspring.com>

**Tobon Screws (Hong Kong) Limited**

Service Area: Kumite anti-rust surface treatment, GEOMET anti-rust surface treatment, no chrome-zinc-aluminum coating, environmentally friendly Dacromet  
[www.tobon.com](http://www.tobon.com)

[info@tobon.com](mailto:info@tobon.com)

**TUNG LIK ELECTROPLATING LTD**

Service Area: Fasteners, small metal parts, colored and non-ferrous metal building materials (iron wire frame)  
<http://tunglikhk.cn.alibaba.com/>

**TONZZE INTERNATIONAL LTD**

Service Area: Electrical and electronic screws, self-tapping screws, three-sided self-tapping screws, black stainless steel nails, ultra-long ultra-fine stainless steel screws  
<Http://www.tonzze.com>  
<Http://www.tonzze.cn>  
67677510

**TUNG TAI PRECISION METAL LTD.**

Service Area: Small metal parts, resistors, electronic components, electronic metal parts, electrical plugs and socket metal parts  
[www.tungtai-metal.com](http://www.tungtai-metal.com)

**ULTRAFORM METAL WORKS CO. LTD.**

Service Area: Die-cast parts, auto parts  
<http://www.ultraform.com.hk>

**UNION ENERGY HONG KONG INDUSTRIES LTD.**

Service Area: Production of spring-loaded connectors, pogo pin & precise metal parts  
<http://www.unionenergy.com.hk>

**VALBRUNA ASIA LTD.**

Service Area: Colorless metal, steel, stainless steel, non-ferrous metals, lead and nickel, colored and non-ferrous materials, construction steel bars  
<http://www.valbruna.org>

**WAH HOI GARMENT & BAGGAGE ACCESSORIES CO. LTD. (WAH HOI INDUSTRIAL (HK) LIMITED )**

Service Area: Metal buckle (handbag accessories), plastic buckle (handbag accessories)  
<http://www.wahhoi.com.hk>

**Wah Ngai Screw Products (Timepiece) Limited**

Service Area: Surface treatment of precision screws, lathe parts and metal stamping parts  
[www.wn-xyh.com](http://www.wn-xyh.com)  
2345 6331  
[wnscrew@netvigator.com](mailto:wnscrew@netvigator.com)  
[ydh6666@163.com](mailto:ydh6666@163.com)

**WEAL LAM PARTS & TOOLS LTD.**

Service Area: Metal stamping, hardware deep drawing, plastic injection molding, finished product assembly  
<http://www.weallam.com>



**WEI XU HARDWARD**

Service Area: Motor screws, TV and TV rack screws, and subway bridge rail screws  
www.dgweixu.com  
zhangsheng20081225@163.com  
weixu926@163.com

**WIELAND METALS (SHENZHEN) LTD**

Service Area: Copper and copper alloy semi-finished products and special products, such as strip, pipe, sheet, bar, wire  
www.wieland.com.cn

**WIN SUN METAL PRODUCTS CO. LTD.**

Service Area: Small Metal Parts, Metal Mold, Plastic Mold, Electronic Metal Parts, Electronic Plastic Parts  
http://www.winsungroup.com

**WING CHEUNG (HONWIN) TRADING CO. LTD.**

Service Area: Metal jewelry  
http://www.wingcheung.com.hk

**WING CHUEN METAL FACTORY LTD.**

Service Area: Metal stamping, precision mold manufacturing, computer numerical control film, metal operation  
www.wcm.com.hk

**WING FAT METAL MANUFACTURING CO., LTD.**

Service Area: Small metal parts (hardware parts), lathe  
www.wingfatltd.com

**WING HING BUTTONS AND BUCKLES LTD.**

Service Area: Clothing accessories, metal buckles, plastic buckles, metal buttons, plastic buttons, rivets for clothing, key chains and buckles  
http://www.winghing-metal-button.com

**Wing Sang Loong (Hop Fat) Copper Aluminium Company Ltd.**

Service Area: Iron, stainless steel anti-loose screws, nuts, lathe parts, multi-function rivets  
www.wslhk.com.cn  
2391 3497skting@wsl.corp.com.hk

**WING SUN METAL PRODUCTS LTD.**

Service Area: Clothing accessories, metal buckles, metal buttons, rivets for clothing  
http://www.wingsun.com

**WING TAT HOUSEHOLD PRODUCTS LTD.**

Service Area: Metal coasters, Metal coffee/tea sets, Metal trays, Bar accessories, Glass vases, Metal candlesticks  
http://www.wingtathk.com.hk

**WING YIP METAL ACCESSORIES MANUFACTORY LTD**

Service Area: Metal buckles, bag accessories and parts, metal frames and hinges for handbags, handbag hooks, metal mesh for handbags  
www.wingyip.com.hk

**WINKO INTERNATIONAL PRODUCTS LTD.**

Service Area: Metal gifts (such as: photo frames, jewelry boxes, key chains, etc.)  
http://www.silverware.com.hk

**WINSON CO.**

Service Area: Stainless steel products (including cosmetic containers)

<http://www.winsonco.com.hk>

**WO LEE STEEL CO. LTD.**

Service Area: Colorless metal, colored and non-ferrous metal building materials, sheet metal engineering, plumbing/drainage laying

<http://www.wolee.com>

**YEE CHEONG HONG MACHINERIES & HARDWARE**

Service Area: Agency in US MOLDMAX copper, Japan YAMAWA wire attack, ASSAB turning tools, steel, Japan Xindong breathable steel and other mold parts

[www.ych-hk.com](http://www.ych-hk.com)

**YELLOW RIVER PRECISION MACHINERY LTD.**

Service Area: Agency in Taiwan Yutai computer automatic lathe, operating all kinds of nuts and various types of washers and other fasteners

<http://www.hopelit.com.hk>

**YU KING INDUSTRIAL LTD.**

Service Area: Small metal parts, metal casings for electronic products, panels and handles, electronic parts for electronic products

<http://www.yuking.com.hk>

**YUE TUNG ELECTRONIC TOYS LIMITED**

Service Area: Games & Toys - Electronics (electronic plastic toys), electric toys

[www.yuetung.com.hk](http://www.yuetung.com.hk)

**YUK KEE METAL & PLASTIC FACTORY LTD.**

Service Area: Mould, kitchen electrical products, electric heater

<http://www.yukkee.com.hk>

Veranstalter



Implementierungsagent



Gefördert aus Mitteln des KMU-Entwicklungsfonds:



Trade and Industry Department  
Hong Kong SAR Government

Any opinions, findings, conclusions or recommendations expressed in this material/ event (or by members of the Project team) do not reflect the views of the Government of the Hong Kong Special Administrative Region, Trade and Industry Department or the Vetting Committee of the SME Development Fund and the Dedicated Fund on Branding, Upgrading and Domestic Sales (Organisation Support Programme).



# HONG KONG

Screw & Fastener Council

