

推广智能互联汽车及新能源汽车技术 提升香港汽车及电子企业的竞争力

To promote the Intelligent Connected Vehicle and New Energy Vehicle technologies,
enhance the competitiveness of Hong Kong companies in the automotive and electronics industry

2023 吉隆坡国际汽车零配件、 维修检测诊断及服务用品展览会 Automechanika Kuala Lumpur 2023

2023年3月16 - 18日

16 - 18 March 2023

吉隆坡会展中心
会议厅3、4
4F01展位
Kuala Lumpur
Convention Centre
Exhibition Hall 3 & 4
Booth 4F01

更多资讯
For more information



工业贸易署「工商机构支援基金」拨款资助
Funded by Trade and Industrial Organisation Support Fund,
Trade and Industry Department



工商機構支援基金
Trade and Industrial Organisation Support Fund

主办机构
Organisers (in arbitrary order)



执行机构
Implementation Agent



合作机构（排名不分先後）
Collaborating Organisations (in arbitrary order)



在此刊物上/活动内（或项目小组成员）表达的任何意见、研究成果、结论或建议，并不代表香港特别行政区政府或工商机构支援基金评审委员会的观点。
Any opinions, findings, conclusions or recommendations expressed in this material/event (or by members of the project team) do not reflect the views of the Government of the Hong Kong Special Administrative Region or the Vetting Committee of the Trade and Industrial Organisation Support Fund.

目录

Contents

01 香港汽车科技研发中心

Automotive Platforms and Application Systems R&D Centre

02 天祥设备有限公司

Blutech Engineering Limited

03 世纪联合控股有限公司

Centenary United Holdings Limited

04 长丰集团股份有限公司

Chang Feng Group Co Limited

05 亿达动力科技有限公司

E Tech Dynamic Technology Co. Ltd

06 科轩动力（控股）有限公司

Ev Dynamics (Holdings) Limited

07 舒麦加科技有限公司

evMega Technology Limited

08 友成科技有限公司

GNS Technology Limited

09 金河科技国际有限公司

Golden River Technology limited

10 金鼎移动传媒有限公司

Golding Mobile Multimedia Limited

11 均顶有限公司

Grant Top Limited

12 香港验车有限公司

Hong Kong Motor Inspection Limited

13 香港智能城市有限公司

Hong Kong Smart City Ltd

14 香港的士软件服务有限公司

Hong Kong Taxi APP Services Limited

15 香港学森科技有限公司

Hong Kong Xuesen Technology Co. Limited

16 鸿利达模具有限公司

Hongrita Mold Ltd.

17 启荣电子软件开发有限公司

Inspiring Light Electronics Software Development Limited

18 天祥公证行有限公司

Intertek Testing Services Hong Kong Ltd.

19 JAB 服务有限公司

JAB Service Limited

20 精美汽车工业有限公司

Jing Mei Automotive Limited

目录

Contents

21 金页 (香港) 有限公司

Kam Yip (Hong Kong) Limited

22 健大企业有限公司

Kenta Enterprise Co. Limited

23 亚图商业资讯有限公司

MapAsia Business Intelligence Limited

24 国图顾问有限公司

MapKing International Limited

25 车师傅有限公司

Master Car Limited

26 名商科技有限公司

MingShang Technology Co. Ltd

27 天籁航讯

NAVI DIGITECH (HK) LIMITED

28 新创新技术有限公司

New Innovation Technology Limited

29 新灵电子技术开发有限公司

New Spirit Technology Ltd.

30 汇本企业有限公司

Prime Capital Enterprises Ltd

31 跃兔能源有限公司

Rabbit Energy Limited

32 国际汽车及航空工程师学会 - 香港有限公司

SAE International (Hong Kong) Limited

33 金桥宏科技有限公司

SEDE HONG SCIENCE & TECHNOLOGY Co. Ltd

34 瑞昌汽车有限公司

Shui Cheong Motors Limited

35 Smart Charge(HK) Limited

36 全速动力有限公司

Speed Up Moto Limited

37 思普瑞云 (香港) 科技有限公司

Sprann (Hong Kong) Technology Co. Limited

38 星科有限公司

Startec Limited

39 雅达模具设计制造有限公司

Ultratech Mold Design & Mfg. Co. Ltd.

40 Urban Mobility Solutions Limited

香港汽车科技研发中心

Hong Kong Automotive Platforms and Application Systems (APAS) R&D Centre



香港九龙塘达之路78号香港生产力大楼4楼

4/F, HKPC Building, 78 Tat Chee Avenue, Kowloon, Hong Kong

电话 Tel: +852 2788 5333

电邮 Email: apas_info@hkpc.org

网址 Website: <https://www.apas.hk/>

公司简介：

香港汽车科技研发中心於2006年由香港特区政府创新科技署成立，并由香港生产力促进局(生产力局)承办。多年来一直与业界、大学和技术机构合作研发技术，并把研发成果转化为商品，从而促进汽车科技发展。本研发中心自成立以来，已执行超过100项目。为促进合作并进一步提高成本效益，研发中心2012年11月1日成为生产力局旗下部门。

Company Introduction:

Hong Kong Automotive Platforms and Application Systems (APAS) R&D Centre was established in 2006 by the Innovation and Technology Commission of the HKSAR Government and undertaken by the Hong Kong Productivity Council (HKPC). Over the years, APAS has been collaborating with industries, universities and technical institutions on technological researches and the commercialisation of R&D results, thereby promoting the development of automotive technology. Over 100 projects have been implemented since the establishment of APAS. To facilitate synergy and further enhance cost effectiveness, APAS has become part of the HKPC since 1 November 2012.

服务简介：

智能流动电动车充电器

智能流动电动车充电器能够提供紧急电动车充电服务，解决电动车於路上「无电抛锚」的问题。只需充电4分钟，即可为电动车续航20公里，让电动车可行驶至就近的充电站进行充电。

主要的好处：

- 1) 提供有效的流动充电服务，有助解决电动车驾驶者的里程焦虑问题
- 2) 只需快充4分钟，便可让电动车增添20公里里程；或只需40分钟便可把电动车快充至8成电*
- 3) 符合多个充电标准，包括日本标准CHAdeMO、欧洲标准IEC CCS (Combo2)及IEC 62196单相交流中速充电
- 4) 促进电动车普及化

应用领域：

- 1) 公共停车场（如购物中心、公众停车场）
- 2) 路边紧急充电服务



Service Information:

Smart Mobile EV Charger

Smart Mobile EV Charger is a mobilised emergency charger that offers roadside assistance when an Electric Vehicle (EV) is out of power. It takes 4 minutes to give the battery-drained EV an extra 20km mileage so that the EV can reach the nearest charging station for proper charging.

Major Benefits:

- 1) Provide effective charging services to ease EV drivers' range anxiety
- 2) Fast charging for 4 minutes to gain 20km ranging distance, or charge an EV to 80% in just 40 minutes*
- 3) All-in-one solution for different EV standards including Japan CHAdeMO, Euro IEC CCS (Combo2) and IEC 62196 single-phase
- 4) Promote EV adoption in the community

Application Areas:

- 1) Public parking areas (e.g. shopping centres, public car parks)
- 2) Emergency roadside charging service

天祥设备有限公司

Blutech Engineering Limited



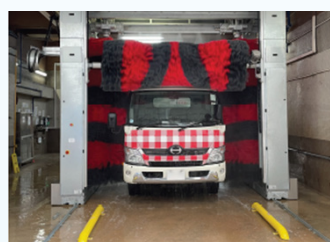
香港新界火炭坳背湾街38-40号华卫工贸中心 13楼14室
4/F, HKPC Building, 78 Tat Chee Avenue, Kowloon, Hong Kong
电话 Tel: +86 18717731848
电邮 Email: sales@blutecheng.com
网址 Website: www.blutecheng.com

公司简介：

天祥设备有限公司经营范围广泛的车库和车间维修设备，包括复杂的车辆测试和检查线、车身维修设备、发动机诊断工具和柴油测试设备，这些设备来自欧洲、美国以外各自领域的任何领先公司地位，日本和中国大陆也是如此。由于我们丰富的经验和深入的知识，我们在香港、澳门、台湾和中国大陆建立了领先的汽车设备供应商的声誉。

Company Introduction:

Our company handles a comprehensive range of Garage & workshop maintenance equipment from sophisticated vehicle testing and inspection lines, body repair equipment, engine diagnostic tool and diesel test equipment that are sources from any leading principals in their respective fields out of Europe, United states, Japan and Mainland china as well. Because of our extensive experience and in-depth knowledge, we have built a reputation as a leading supplier of automotive equipment in Hong Kong, Macau, Taiwan and Mainland China.



世纪联合控股有限公司

Centenary United Holdings Limited



中山市西区彩虹大道40号
40 rainbow Avenue, West district, Zhongshan
电 话 Tel: 0760-88160318
电 邮 Email: centenary-united@car2000.com.cn
网 址 Website: <https://www.car2000.com.cn/>

公司简介：

世纪联合控股有限公司於1999年成立，是大湾区领先的汽车经销商集团。公司专注于新能源汽车品牌、中高端中外合资及国际品牌、新能源车充电网络建设运营、网约车出行业务、二手车业务等，致力成为一站式综合性汽车服务提供商，创造美好出行。

目前在大湾区运营38家汽车门店，代理品牌包括：广汽埃安、北汽极狐、飞凡汽车、零跑汽车、长城欧拉、大众ID、东风新能源、思皓新能源、电动屋9个电动车品牌，及捷豹路虎、凯迪拉克、东风日产、北京现代、一汽丰田、一汽大众、东风启辰、雪佛兰、大众新捷达及别克等。

Company Introduction:

The Centenary United Holdings Limited, established in 1999, have obtained the leading position among all automobile dealer group in the Greater Bay Area ("GBA" for short).

We focus on new energy vehicle brands, medium and high-end Sino foreign joint ventures and international brands, new energy vehicle charging network construction and operation, online car hailing travel business, used car business, etc. Committed to becoming a one-stop comprehensive automobile service provider, creating a better travel.

The Group operate a total of 38 outlets in GBA now. And we The Group has up to 19 brands authorised by automobile manufacturers, among which 9 are pure electric vehicle brands, namely GAC Aion, Leapmotor, ORA, Volkswagen ID, Dongfeng New Energy, EVHouse, Sehol New Energy, ARCFOX and MARVEL R, and 10 are mid-to-high-end joint venture brands, namely Jaguar Land Rover, FAW-Volkswagen, Buick, Chevrolet, FAW Toyota, Dongfeng Nissan, Dongfeng Venucia, Cadillac, Beijing Hyundai and Volkswagen New Jetta.

服务简介：

新能源汽车品牌代理及销售、中高端品牌汽车销售、充电站建设运营、网约车出行业务、二手车业务、维修保养、汽车美容、保险代理业务。

Service Information:

Electric vehicle brand dealership business, Middle and high-end joint venture brand automobile sales business, Charging network business, online ride-hailing travel service with electric vehicle, Used vehicle business, Service and Maintenance, Car beauty service, Insurance agency business.

长丰集团股份有限公司

Cheng Feng Group Co Limited



Unit 17, 9/F., Tower A, New Mandarin Plaza, No.14 Science Museum Road,

Tsim Sha Tsui, Kowloon, Hong Kong

电话 Tel: +86 0755-2977 6155 / 13316926528

电邮 Email: sales-002@dfjm.cn

网址 Website: www.dfjm.cn

公司简介：

长丰集团致力於研发製造汽车互联网、新能源、BCM、ECU、ABS、IBS、EPB、ADAS雷达（超声波，毫米波，激光）、ADAS摄像头、及AI人工智能相关连接器/控制盒。公司目前拥有40多项发明专利、实用新型专利及外观专利，15年来累计向车厂销售6000万套连接器。已属国家高新科技认证企业，通过IATF16949认证。

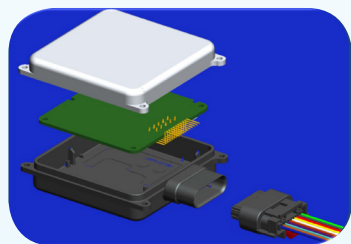
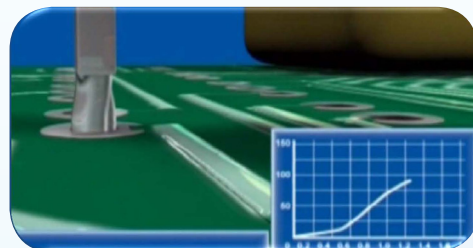
Company Introduction:

- Our Group is devoted in developing car manufacturing networks, new energy vehicles, BCM, ECU, ABS, IBS, EPB, ADAS radar, ADAS camera, and AI Artificial Intelligence smart connecting drive. Being one of the national high-tech enterprises and IATF16949 approved, we have more than 40 invention patents, utility model patents, and has sold over 60 million adaptors to automobile manufacturers throughout 15 years.

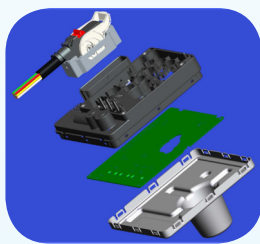
服务简介：

免焊接技术的设计及测试能够达到汽车连接测试标准（基於IEC，EIA和SAE等国际标准），其中包括振动，机械性能及热冲击（温度高达125℃）测试。

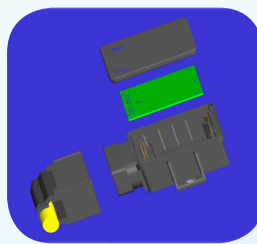
1. 已经拥有0.4mm, 0.64mm与0.8mm三种厚度规格Press-fit的产品设计
2. 兼容各种PCB电镀形式



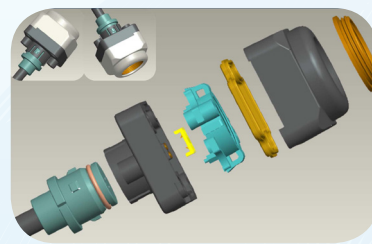
77G/79G毫米波雷达



IBS智能刹车控制盒定制
(免焊接)



EPB电子助力控制盒定制
(免焊接)



ADAS摄像头连接方案



ADAS Press-fit探头连接方案

DF-SERIES CONNECTOR

DF-DT001

DF-DT002

DF-DT003

DF-DT004

DF-DT005

DF-DT006

DF-DT007

DF-DT008

DF-DT009

DF-DT010

DF-DT011

DF-DT012

DF-DT013

DF-DT014

DF-DT015

DF-DT016

DF-DT017

DF-DT018

DF-DT019

DF-DT020

DF-DT021

DF-DT022

DF-DT023

DF-DT024

DF-DT025

DF-DT026

DF-DT027

DF-DT028

DF-DT029

DF-DT030

DF-DT031

DF-DT032

DF-DT033

DF-DT034

DF-DT035

DF-DT036

DF-DT037

DF-DT038

DF-DT039

DF-DT040

DF-DT041

DF-DT042

DF-DT043

DF-DT044

DF-DT045

DF-DT046

DF-DT047

DF-DT048

DF-DT049

DF-DT050

DF-DT051

DF-DT052

DF-DT053

DF-DT054

DF-DT055

DF-DT056

DF-DT057

DF-DT058

DF-DT059

DF-DT060

DF-DT061

DF-DT062

DF-DT063

DF-DT064

DF-DT065

DF-DT066

DF-DT067

DF-DT068

DF-DT069

DF-DT070

DF-DT071

DF-DT072

DF-DT073

DF-DT074

DF-DT075

DF-DT076

DF-DT077

DF-DT078

DF-DT079

DF-DT080

DF-DT081

DF-DT082

DF-DT083

DF-DT084

DF-DT085

DF-DT086

DF-DT087

DF-DT088

DF-DT089

DF-DT090

DF-DT091

DF-DT092

DF-DT093

DF-DT094

DF-DT095

DF-DT096

DF-DT097

DF-DT098

DF-DT099

DF-DT100

DF-DT101

DF-DT102

DF-DT103

DF-DT104

DF-DT105

DF-DT106

DF-DT107

DF-DT108

DF-DT109

DF-DT110

DF-DT111

DF-DT112

DF-DT113

DF-DT114

DF-DT115

DF-DT116

DF-DT117

DF-DT118

DF-DT119

DF-DT120

DF-DT121

DF-DT122

DF-DT123

DF-DT124

DF-DT125

DF-DT126

DF-DT127

DF-DT128

DF-DT129

DF-DT130

DF-DT131

DF-DT132

DF-DT133

DF-DT134

DF-DT135

DF-DT136

DF-DT137

DF-DT138

DF-DT139

DF-DT140

DF-DT141

DF-DT142

DF-DT143

DF-DT144

DF-DT145

DF-DT146

DF-DT147

DF-DT148

DF-DT149

DF-DT150

DF-DT151

DF-DT152

DF-DT153

DF-DT154

DF-DT155

DF-DT156

DF-DT157

DF-DT158

DF-DT159

DF-DT160

DF-DT161

DF-DT162

DF-DT163

DF-DT164

DF-DT165

DF-DT166

DF-DT167

DF-DT168

DF-DT169

DF-DT170

DF-DT171

DF-DT172

DF-DT173

DF-DT174

DF-DT175

DF-DT176

DF-DT177

DF-DT178

DF-DT179

DF-DT180

DF-DT181

DF-DT182

DF-DT183

DF-DT184

DF-DT185

DF-DT186

DF-DT187

DF-DT188

DF-DT189

DF-DT190

DF-DT191

DF-DT192

DF-DT193

DF-DT194

DF-DT195

DF-DT196

DF-DT197

DF-DT198

DF-DT199

DF-DT200

DF-DT201

DF-DT202

DF-DT203

DF-DT204

DF-DT205

DF-DT206

DF-DT207

DF-DT208

DF-DT209

DF-DT210

DF-DT211

DF-DT212

DF-DT213

DF-DT214

DF-DT215

DF-DT216

DF-DT217

DF-DT218

DF-DT219

DF-DT220

DF-DT221

DF-DT222

DF-DT223

DF-DT224

DF-DT225

DF-DT226

DF-DT227

DF-DT228

DF-DT229

DF-DT230

DF-DT231

DF-DT232

DF-DT233

DF-DT234

DF-DT235

DF-DT236

DF-DT237

DF-DT238

DF-DT239

DF-DT240

DF-DT241

DF-DT242

DF-DT243

DF-DT244

DF-DT245

DF-DT246

DF-DT247

DF-DT248

DF-DT249

DF-DT250

DF-DT251

DF-DT252

DF-DT253

DF-DT254

DF-DT255

DF-DT256

DF-DT257

DF-DT258

DF-DT259

DF-DT260

DF-DT261

DF-DT262

DF-DT263

DF-DT264

DF-DT265

DF-DT266

DF-DT267

DF-DT268

DF-DT269

DF-DT270

DF-DT271

DF-DT272

DF-DT273

DF-DT274

DF-DT275

DF-DT276

DF-DT277

DF-DT278

DF-DT279

DF-DT280

DF-DT281

DF-DT282

DF-DT283

DF-DT284

DF-DT285

DF-DT286

DF-DT287

DF-DT288

DF-DT289

DF-DT290

DF-DT291

DF-DT292

DF-DT293

DF-DT294

DF-DT295

DF-DT296

DF-DT297

DF-DT298

DF-DT299

DF-DT300

DF-DT301

DF-DT302

DF-DT303

DF-DT304

DF-DT305

DF-DT306

DF-DT307

DF-DT308

DF-DT309

DF-DT310

DF-DT311

DF-DT312

DF-DT313

DF-DT314

DF-DT315

DF-DT316

DF-DT317

DF-DT318

DF-DT319

DF-DT320

DF-DT321

DF-DT322

DF-DT323

DF-DT324

DF-DT325

DF-DT326

DF-DT327

DF-DT328

DF-DT329

DF-DT330

DF-DT331

DF-DT332

DF-DT333

DF-DT334

DF-DT335

DF-DT336

DF-DT337

DF-DT338

DF-DT339

DF-DT340

DF-DT341

DF-DT342

DF-DT343

DF-DT344

DF-DT345

DF-DT346

DF-DT347

DF-DT348

DF-DT349

DF-DT350

DF-DT351

DF-DT352

DF-DT353

DF-DT354

DF-DT355

DF-DT356

DF-DT357

DF-DT358

DF-DT359

DF-DT360

DF-DT361

DF-DT362

DF-DT363

DF-DT364

DF-DT365

DF-DT366

DF-DT367

DF-DT368

DF-DT369

DF-DT370

DF-DT371

DF-DT372

DF-DT373

DF-DT374

DF-DT375

DF-DT376

DF-DT377

DF-DT378

DF-DT379

DF-DT380

DF-DT381

DF-DT382

DF-DT383

DF-DT384

DF-DT385

DF-DT386

DF-DT387

DF-DT388

DF-DT389

DF-DT390

DF-DT391

DF-DT392

DF-DT393

DF-DT394

DF-DT395

DF-DT396

DF-DT397

DF-DT398

DF-DT399

DF-DT400

DF-DT401

DF-DT402

DF-DT403

DF-DT404

DF-DT405

DF-DT406

DF-DT407

DF-DT408

DF-DT409

DF-DT410

DF-DT411

DF-DT412

DF-DT413

DF-DT414

DF-DT415

DF-DT416

DF-DT417

DF-DT418

DF-DT419

DF-DT420

DF-DT421

DF-DT422

DF-DT423

DF-DT424

DF-DT425

DF-DT426

DF-DT427

DF-DT428

DF-DT429

DF-DT430

DF-DT431

DF-DT432

DF-DT433

DF-DT434

DF-DT435

DF-DT436

DF-DT437

DF-DT438

DF-DT439

DF-DT440

DF-DT441

DF-DT442

DF-DT443

DF-DT444

DF-DT445

DF-DT446

DF-DT447

DF-DT448

DF-DT449

DF-DT450

DF-DT451

DF-DT452

DF-DT453

DF-DT454

DF-DT455

DF-DT456

DF-DT457

DF-DT458

DF-DT459

DF-DT460

DF-DT461

DF-DT462

DF-DT463

DF-DT464

DF-DT465

DF-DT466

DF-DT467

DF-DT468

DF-DT469

DF-DT470

DF-DT471

DF-DT472

DF-DT473

DF-DT474

DF-DT475

DF-DT476

DF-DT477

DF-DT478

DF-DT479

DF-DT480

DF-DT481

DF-DT482

DF-DT483

DF-DT484

DF-DT485

DF-DT486

DF-DT487

DF-DT488

DF-DT489

DF-DT490

DF-DT491

DF-DT492

DF-DT493

DF-DT494

DF-DT495

DF-DT496

DF-DT497

DF-DT498

DF-DT499

DF-DT500

DF-DT501

DF-DT502

DF-DT503

DF-DT504

DF-DT505

DF-DT506

DF-DT507

DF-DT508

DF-DT509

DF-DT510

DF-DT511

DF-DT512

DF-DT513

DF-DT514

DF-DT515

DF-DT516

DF-DT517

DF-DT518

DF-DT519

DF-DT520

DF-DT521

DF-DT522

DF-DT523

DF-DT524

DF-DT525

DF-DT526

DF-DT527

DF-DT528

DF-DT529

DF-DT530

DF-DT531

DF-DT532

DF-DT533

DF-DT534

DF-DT535

DF-DT536

DF-DT537

DF-DT538

DF-DT539

DF-DT540

DF-DT541

DF-DT542

DF-DT543

DF-DT544

DF-DT545

DF-DT546

DF-DT547

DF-DT548

DF-DT549

DF-DT550

DF-DT551

DF-DT552

DF-DT553

DF-DT554

DF-DT555

DF-DT556

DF-DT557

DF-DT558

DF-DT559

DF-DT560

DF-DT561

DF-DT562

DF-DT563

DF-DT564

DF-DT565

DF-DT566

DF-DT567

DF-DT568

DF-DT569

DF-DT570

DF-DT571

DF-DT572

DF-DT573

DF-DT574

DF-DT575

DF-DT576

DF-DT577

DF-DT578

DF-DT579

DF-DT580

DF-DT581

DF-DT582

DF-DT583

DF-DT584

DF-DT585

DF-DT586

DF-DT587

DF-DT588

DF-DT589

DF-DT590

DF-DT591

DF-DT592

DF-DT593

DF-DT594

DF-DT595

DF-DT596

DF-DT597

DF-DT598

DF-DT599

DF-DT600

DF-DT601

DF-DT602

DF-DT603

DF-DT604

DF-DT605

DF-DT606

DF-DT607

DF-DT608

DF-DT609

DF-DT610

DF-DT611

DF-DT612

DF-DT613

DF-DT614

DF-DT615

DF-DT616

DF-DT617

DF-DT618

DF-DT619

DF-DT620

DF-DT621

DF-DT622

DF-DT623

DF-DT624

DF-DT625

DF-DT626

DF-DT627

DF-DT628

DF-DT629

DF-DT630

DF-DT631

DF-DT632

DF-DT633

DF-DT634

DF-DT635

DF-DT636

DF-DT637

DF-DT638

DF-DT639

DF-DT640

DF-DT641

DF-DT642

DF-DT643

DF-DT644

DF-DT645

DF-DT646

DF-DT647

DF-DT648

DF-DT649

DF-DT650

DF-DT651

DF-DT652

DF-DT653

DF-DT654

DF-DT655

DF-DT656

DF-DT657

DF-DT658

DF-DT659

DF-DT660

DF-DT661

DF-DT662

DF-DT663

DF-DT664

DF-DT665

DF-DT666

DF-DT667

DF-DT668

DF-DT669

DF-DT670

DF-DT671

DF-DT672

DF-DT673

DF-DT674

DF-DT675

DF-DT676

DF-DT677

DF-DT678

DF-DT679

DF-DT680

DF-DT681

DF-DT682

DF-DT683

DF-DT684

DF-DT685

DF-DT686

DF-DT687

DF-DT688

DF-DT689

DF-DT690

DF-DT691

DF-DT692

DF-DT693

DF-DT694

DF-DT695

DF-DT696

DF-DT697

DF-DT698

DF-DT699

DF-DT700

DF-DT701

DF-DT702

DF-DT703

DF-DT704

DF-DT705

DF-DT706

DF-DT707

DF-DT708

DF-DT709

DF-DT710

DF-DT711

DF-DT712

DF-DT713

DF-DT714

DF-DT715

DF-DT716

DF-DT717

DF-DT718

DF-DT719

DF-DT720

DF-DT721

DF-DT722

DF-DT723

DF-DT724

DF-DT725

DF-DT726

DF-DT727

DF-DT728

DF-DT729

DF-DT730

DF-DT731

DF-DT732

DF-DT733

DF-DT734

DF-DT735

DF-DT736

DF-DT737

DF-DT738

DF-DT739

DF-DT740

DF-DT741

DF-DT742

DF-DT743

DF-DT744

DF-DT745

DF-DT746

DF-DT747

DF-DT748

DF-DT749

DF-DT750

DF-DT751

DF-DT752

DF-DT753

DF-DT754

DF-DT755

DF-DT756

DF-DT757

DF-DT758

DF-DT759

DF-DT760

DF-DT761

DF-DT762

DF-DT763

DF-DT764

DF-DT765

DF-DT766

DF-DT767

DF-DT768

DF-DT769

DF-DT770

DF-DT771

DF-DT772

DF-DT773

DF-DT774

DF-DT775

DF-DT776

DF-DT777

DF-DT778

DF-DT779

DF-DT780

DF-DT781

DF-DT782

DF-DT783

DF-DT784

DF-DT785

DF-DT786

DF-DT787

DF-DT788

DF-DT789

DF-DT790

DF-DT791

DF-DT792

DF-DT793

DF-DT794

DF-DT795

DF-DT796

DF-DT797

DF-DT798

DF-DT799

DF-DT800

DF-DT801

DF-DT802

DF-DT803

DF-DT804

DF-DT805

DF-DT806

DF-DT807

DF-DT808

DF-DT809

DF-DT810

DF-DT811

DF-DT812

DF-DT813

DF-DT814

DF-DT815

DF-DT816

DF-DT817

DF-DT818

DF-DT819

DF-DT820

DF-DT821

DF-DT822

DF-DT823

DF-DT824

DF-DT825

DF-DT826

DF-DT827

DF-DT828

DF-DT829

DF-DT830

DF-DT831

DF-DT832

DF-DT833

DF-DT834

DF-DT835

DF-DT836

DF-DT837

DF-DT838

DF-DT839

DF-DT840

DF-DT841

DF-DT842

DF-DT843

DF-DT844

DF-DT845

DF-DT846

DF-DT847

DF-DT848

DF-DT849

DF-DT850

DF-DT851

DF-DT852

DF-DT853

DF-DT854

DF-DT855

DF-DT856

DF-DT857

DF-DT858

DF-DT859

DF-DT860

DF-DT861

DF-DT862

DF-DT863

DF-DT864

DF-DT865

DF-DT866

DF-DT867

DF-DT868

DF-DT869

DF-DT870

DF-DT871

DF-DT872

DF-DT873

DF-DT874

DF-DT875

DF-DT876

DF-DT877

DF-DT878

DF-DT879

DF-DT880

DF-DT881

DF-DT882

DF-DT883

DF-DT884

DF-DT885

DF-DT886

DF-DT887

DF-DT888

DF-DT889

DF-DT890

DF-DT891

DF-DT892

DF-DT893

DF-DT894

DF-DT895

DF-DT896

DF-DT897

DF-DT898

DF-D

亿达动力科技有限公司

E. Tech Dynamic Technology Co. Ltd.



香港科学园三期16W座9楼903室
Rm. 903, 9/F, Block 16W, Hong Kong Science Park Phase 3, N.T
电 话 Tel: +852 2117 1337
电 邮 Email: info@et-dt.com
网 址 Website: <http://vertecmotors.com>

公司简介：

公司成立於2014年中，透过市场纬度和後端需求，度身订造所需的电动车。公司与一汽解放汽车有限公司签订了「战略合作框架协议」，共同研发及推广纯电动货车。

亿达的电动车项目已扩展到其他的车种。除了跟一汽合作研发的5.5吨货车外，我们更共同研发16吨纯电动货车及勾斗车。我们同时与厦门金龙客车合作，共同研发纯电动28座低地台中型巴士，以及19座纯电动小巴，为他们带来使用新能源汽车的优势，为本港成为「绿色香港」的目标，带来重要的里程碑。

亿达亦积极跟其他无人驾驶及机械人公司，共同开发5G通讯无人驾驶项目及消防机械人。

服务简介：

亿达动力业务为电动车及机械人研发，本公司与现时有16吨纯电动货车、28座纯电动中型巴士、19座纯电动小巴以及消防机械人；16吨车现有有参与环保署的合作项目。

亿达亦有研发纯电动28座纯电动低地台中型旅游巴士及19座纯电集电弓顶充小巴，更与无人驾驶公司合作，於28座及19座车辆加入无人驾驶技术，现在亦已成功研发无人驾驶巴士。

亿达同时研发纯电动消防灭火及伤者救援两用机械人，此机械人可按需要轻易转换功能，亦配置多种高科技配件，协助消防员在恶劣火场环境灭火。此机械人另一特色为800公斤可承载能力，可轻易拉动负载及撞开障碍物。

16吨纯电动货车



19座纯电动小巴



消防机械人



28座纯电动巴士



科轩动力（控股）有限公司

Ev Dynamics (Holdings) Limited



EvDynamics

香港湾仔骆克道333号亚洲联合财务中心46楼

46/F, United Asia Finance Centre, 333 Lockhart Road, Wanchai, Hong Kong

电话 Tel: +852 2152-9998

电邮 Email: john@evdynamics.com

网址 Website: www.evdynamics.com

公司简介：

科轩动力（控股）有限公司为新能源商用车的先行者和实践者、专用客车和新能源客车整车生产商，在新能源平台化电系统及关键零部件方面有着坚实的技术基础，是出行与物流综合解决方案的供应商。集团在中国重庆设有生产基地，拥有广泛的海内外销售网络，及重点开拓东南亚、欧洲和拉丁美洲的高增长市场。

Company Introduction:

Ev Dynamics (Holdings) Limited is a pioneer and prominent player in China's new energy commercial vehicles market, as well as a whole-vehicle manufacturer of specialty passenger vehicles and new energy passenger vehicles. It is an integrated driving and logistics solutions provider with a solid technological foundation in diverse areas including new energy platform power systems and their key components. The Group has a production base in Chongqing, PRC, boasts extensive domestic and overseas sales networks, and focuses on serving high-growth markets in Southeast Asia, Europe and Latin America.

服务简介：

Apex-Deluxe / 12米纯电动大巴

唯一拥有自主核心技术，包括所有零部件甚至整车都通过香港，中国国标及欧盟验证中心的测试。

Apex Mini / 7米纯电动小巴

通过香港运输署“型号审批”及电动公共小巴供应商资格预审。

APEX EVLT-EW7 / 电动配送货车

采用电子平台底盘，包含传动系统、电池和车辆控制单元以及驾驶室，可配置现有配送货车的车身。

6.5米电动小巴

为菲律宾市场专门定制该款电动巴士作市内客运用途。以可快充电池运作，配备全套空调设施以及专为残疾人士和长者设计的可伸缩斜坡。

Service Information:

Apex-Deluxe/12-meter pure electric bus

The only one with independent core technology, including all parts and even the whole vehicle have passed the test of Hong Kong, PRC GB Standard and EU test centers.

Apex Mini/7-meter pure electric minibus

Passed the "type approval" of the Hong Kong Transport Department and the pre-qualification of electric public light bus suppliers.

APEX EVLT-EW7/ 4.5tons electric delivery van

Electronic platform chassis containing drivetrain, battery and vehicle control unit, and cab that can be configured with the body of an existing delivery van.

6.5m Electric Minibus

This electric bus is specially customized for the Philippine market for urban passenger transportation. Runs on fast-charge batteries, is fully air-conditioned and has retractable ramps designed for the disabled and the elderly.



Apex-Deluxe / 12米纯电动大巴
Apex-Deluxe / 12-meter pure electric bus



Apex Mini / 7米纯电动小巴
Apex Mini / 7-meter pure electric minibus



APEX EVLT-EW7 / 电动配送货车
APEX EVLT-EW7 / 4.5tons electric delivery van



6.5米电动小巴
6.5m Electric Minibus

舒麦加科技有限公司

evMega Technology Limited



香港荃湾青山公路611-619号东南工业大厦24楼A室

Unit A, 24/F., Southeast Industrial Building, 611-619 Castle Peak Road, Tsuen Wan, N.T., Hong Kong.

电话 Tel: +852 2180 2400

电邮 Email: sales@evmega.com

网址 Website: www.evmega.com

公司简介：

舒麦加科技有限公司 (evMega) 是NLSE集团旗下的子公司，於2017成立，是一间提供环保电动车智能充电设施及方案的供应商。我们拥有自家研发团队，从设计、安装、测试、调试、操作至售后服务，而生产基地设於广东省江门市，以最高的灵活性为客户提供一站式的解决方案。

Company Introduction:

evMega was founded in 2017 and is professional company specializing in electric vehicle (EV) charger and EV charger infrastructure system solutions. We have developed our own EV charger and system solution and deployed it for key players in the market. Our products include AC/DC charges, EV charger management and control system, etc.

服务简介：

电动车充电器 (TB5SA)

- 创新设计、防护等级 IP65
- 提供高达 21kW 的充电功率
- IEC Type 2插座
- 支持负载管理控制
- 5" 显示屏和触摸按钮操作
- WIFI、OCPP1.6



自助付费亭

- 非注册客户一次性付款
- 支持OCPP1.6J
- 支援无上限的充电器
- 17" 触控液晶显示器
- 八达通读卡器 / VISA 读卡器 (可选)
- 符合八达通型式批准要求 (参考：TAT-21054)

Service Information:

AC Charger (TB5SA)

- Innovative, Compact, IP Level 65
- Delivering up to 21kW charging power
- IEC type 2 Socket Outlet
- Support Load Management Control
- 5" Display Touch Button with High brightness status LED
- WIFI, LAN, OCPP1.6



Payment Kiosk

- Onetime payment for non-registered customer
- Support OCPP1.6J
- Support unlimited Chargers & Kiosks
- 17" Touch LCD Monitor
- Octopus Card Reader / VISA Reader (Optional)
- Comply with Octopus Type Approval Requirements (Ref: TAT-21054)

电力负载平衡系统

- 让充电器的安装数量至少增加一倍，又同时不会使主供电源过载
- 由智能控制器24小时实时监控每台在充电的电动车
- 实时动态分配合适的电流到各电动车
- 让每一辆车能有最佳充电功率



Load Management System

- allows to increase the number of chargers installed by twice without overloading the main power supply
- monitor the electric vehicles that are charging in the station
- analyze the data on the charger's energy meter
- help to distribute the electric supply in the most efficient way

Snapcharge 2.0

- 电动车充电器管理和控制系统
- 让营运商掌握充电数据、交易记录、日志数据记录
- 以清楚易明的仪表板和带有充电器图标的真实停车场地图作远程管理



Snapcharge 2.0

- an EV charger management and control system
- facilitates site operator for management of their EV charging station remotely by firmer grasp of charging data, transaction record, log data records
- providing pleasing visual presentation, such as dashboard and real car parking site map with charger icon

友成科技有限公司

GNS Technology Limited

九龙湾宏通街1号启福工业大厦7楼707室

Room 707, 7/F, 3 Wang Tung Street, Kai Fuk Industrial Centre, Kooloon Bay, Hong Kong

电 话 Tel: +852 9463 5158

电 邮 Email: erictsang@gnstec.com.hk

网 址 Website: <https://www.gnstec.com.hk/>

公司简介：

友成科技提供一站式自动及数据化方案，我们主要服务对象为运输及物流行业。我们可以在生产线上使用人工智能及科技，务求为物流公司降低成本，提高利润。

Company Introduction:

GNS Technology Limited is an automation and digitalization focus development company based in Hong Kong Science and Technology Park. We are a team of dedicated A.I. software engineers with a vision to develop state-of-the-art A.I. technologies and enhancing the transport and logistics industry for the future.

服务简介：

友成科技公司为物流业界提供一站式的人工智能方案，希望以人工智能可以为传统的物流业界带来改革。一直以来，物流业界都采用传统人手处理货件，例如人手量度货件的三维，barcode，重量等，这不但需要大量的人手去应付庞大的货物量，而且使用人力资源更有可能发生错误及意外。

因此，在大时代和科技的变迁下，友成科技公司全力发展物流业上的智能科技，如全自动化的运输带，可以在一秒内量度货件的维度 重量及barcode。从而减少人力资源，降低成本，避免意外，提升效率。

另外，友成公司亦全力发展不同型号的自动化机器，希望可以满足不同物流公司的货件形状。现有的自动化机器可以由小型到大型甚至卡板货件形状提供服务。

Service Information:

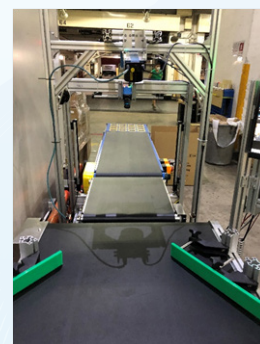
GNS Technology Limited offers one-stop automation services and products in logistic industry. We are hoping that our products and services could bring the logistic industry into a new era. In the past years, labor resource has always been the biggest part in the logistic industry such as scanning the dimension, weights and barcodes of goods manually. However, the more amount of goods needed to be handle the more labor resource is needed. And more labor resource might lead to increase the chances of mistakes and accidents.

In order to increase the efficient and reduces the chances of mistakes and accidents by labor, we are utilizing automation technology on our products such as Dimension Weights Scanning System (DWS), it scans the dimensions, weights and barcodes in 1 second. The benefits of our DWS system are reducing labor resource, minimizing costs, avoiding accidents and increasing efficient and effectiveness in the production lines.

Futhermore, there are various models that we are developing for different sizes or shapes of goods. Our DWS system could now target all the sizes of goods from small cartoons to pallets goods.



Dimension Weights Scanning System C – Series



Dimension Weights Scanning System C – Series



Dimension Weights Scanning System B – Series

金河科技国际有限公司



金河科技國際有限公司
Golden River Technology Limited

Golden River Technology International Limited

Flat B, 1/F Blk, 10 Tao Fung Shan Rd, Shatin, N.T. Hong Kong

电 话 Tel: +852 5343 7571

电 邮 Email: goldenriver.mingchan@gmail.com

公司简介：

金河科技国际有限公司成立於2015年。主要业务为开发电动车充电站之管理系统。其中与香港生产力促进局汽车科技研发中心合作研发管系统，在各个拥有电动车充电站之停车场使用並顺利运作。除此之外，亦在其他项目积极发展例如智能耕种平台等。在不久将来会在不同的项目上会继续研发更多系统。

Company Introduction:

Golden River Technology International Limited started since 2015. The major business is to develop EV charging management system. Cooperate with HKPC (Hong Kong Productivity Council) APAS to research and development the EV charging management system, and well used in parking for EV charging stations. On the other hand, our company actively developing others projects. Eg. Smart Farming platform. In the near future will be in different projects to continue developing more intelligent systems.

金鼎移动传媒有限公司

Golding Mobile Multimedia Limited



香港九龙观塘创业街36号华基中心17楼1703
Room 1703, 17/F, Ricky Centre, 36 Chong Yip Street, Kwun Tong, Kowloon, Hong Kong
电话 Tel: +852 6325 8313 / +86 13809835923
电邮 Email: xulq@goldingmedia.com

公司简介：

金鼎移动媒体有限公司是大湾区唯一跨境巴士网络数字媒体平台（人工智能MOST光纤网络传输系统平台），拥有20多项自主知识产权及著作版权。为全国的巴士、高铁、游轮、航空、歌剧院等提供互动式的多媒体影视娱乐资讯系统的技术方案开发、渠道网络资源建设、媒体运营和影视内容的製作。並致力於为客户提供全面整套的传播服务，线上媒体、跨境巴士、户外广告、活动策划等融媒体的运营。业务涉及汽车、IT、地产、金融、快消、城市、家电、医药、化妆品等诸多领域，构建了出行数字商业媒体及娱乐一体的产业生态。

Company Introduction:

Golding Mobile Multimedia Limited is the only cross-border buss network digital media platform (artificial intelligence Media Oriented Systems Transport) in the Greater Bay Area. We have over 20 autonomous intellectual property right and invention patents. We develop and offer interactive multimedia and entertainment systems for buses, high speed rails, cruises, planes and opera houses nationwide, as well as building multi-channel networks, media operations and content production. We are dedicated in providing comprehensive multimedia services, digital media, cross-border buses, outdoor advertisements, event planning services and etc. As we continue to foster an ecosystem of e-commerce and multimedia, our work involves a myriad of industries encompassing automobile, IT, property, finance, electronics, drugs, cosmetics and more.

服务简介：

MOST是英文Media Oriented Systems Transport的首字母缩写，中文全称是媒体定向系统传输，是应用在汽车及其他交通工具的一种车内网络界面标准。它利用光纤作为信息传导媒介进行数字信号的传输，其传输速率远超其它的汽车总线技术如CAN，FlexRay。MOST技术已从以前25Mbps的MOST25，50Mbps的MOST50发展到当前的150Mbps的MOST150技术。人工智能MOST数字媒体网络就是基於MOST150技术开发的，网络採用多环连接，最多可以支持上百个节点同时连接互联网进行海量音视频传输和交互，乘客可以实时连接互联网浏览网页並观看高清电影，视频和进行互动，另外运营商也可以通过这套系统管理並且调度车队，实时广播资讯。经过我们的研发，我们还将将图像识别技术以及人工智能技术加入到了这个系统，丰富了系统的功能，不仅为乘客推荐喜爱的节目内容，还可以帮助运营商开发验票及统计乘客人数等其他实用性功能等等。

Service Information:

MOST is the acronym of Media Oriented Systems Transport, it is an in-built networking structural standard which can be applied in cars and other vehicles. Using optical fiber as a message delivery agent to send out digital signals, its delivery speed outperforms other automotive bus technology such as CAN, FlexRay. Based on the deployment of MOST150, artificial intelligence MOST digital media network is developed, supporting over hundred nodes while connecting to the internet and delivering videos. Commuters could browse high-res videos, whereas operators could deliver instant announcement using the system. Image recognition and AI technology have been incorporated in the system for more extensive features, which includes show recommendations, confirmation of ticketing and counting of passengers.

均顶有限公司

Grant Top Limited

香港上环西干诺道西28号威胜商业大厦5楼510室

Flat/Rm 510, 5/F, Wayson Commercial Building, 28 Connaught Road, West Sheung Wan, Hong Kong

电 话 Tel: +86 139 0292 8501

电 邮 Email: 13902928501@139.com

公司简介：

均顶有限公司具备充足的技术经验，长期为车厂（例如东风柳汽、吉利汽车等等）提供新能源车的核心零部件，包括电机电控系统研发和应用，致力为纯电动巴士提供高效节能的电驱动系统解决方案，包括为电动货车提供碳化硅双模控制系统。

Company Introduction:

Grant Top has been engaging in automotive parts and accessories industry to provide technical solution of electric motor and motor drive system for automotive OEMs (i.e. Dongfeng Liuzhou Motor, Geely Commercial Vehicles). Grant Top has rich technical competence and commercial experience, they could partner with the big automotive OEMs to promote SiC dual-mode drive control system on their next generation electric trucks.

服务简介：

碳化硅（SiC）控制系统，采用先进的第三代宽禁带半导体碳化硅技术，具有高开关频率，高效率，高功率密度等优点。该产品适用于中、高电压等级的乘用车、商用车以及物流车等。

Service Information:

Silicon carbide (SiC) control system, using advanced third-generation wide bandgap semiconductor silicon carbide technology, has the advantages of high switching frequency, high efficiency, high power density and so on. This product is suitable for passenger cars, commercial vehicles and logistics vehicles in medium and high voltage levels.

香港驗車有限公司

Hong Kong Motor Inspection Limited



香港中環德輔道中 19 号環球大廈2404 室

Flat 2404, 24/F, World Wide House, 19 Des Voeux Road, Central, Hong Kong

電話 Tel: +852 2720 4200

電郵 Email: admin@hkmi.com.hk

網址 Website: www.hkmi.com.hk

公司簡介：

隨著科技不斷進步，汽車的電子功能、機械結構及車架設計也日趨複雜，惟有經驗豐富、技巧純熟的專家，才能準確確定汽車和二手車的毛病與問題。如二手車買家未能發現問題而購入問題二手車輛，日後龐大的維修費用，將為買家帶來沉重的經濟負擔。

香港驗車會派遣專家到二手車行或私人賣家的住所驗車，隨時隨地為二手車買家提供高質素及全面的檢車服務。香港驗車的工具車，備有液壓起重機、電腦測試和評估儀器，各種驗車工具一應俱全。我們深信，專業的驗車專家，加上裝備齊全的工具車，定能為二手車買家及新車客人提供香港最全面及最专业的汽車檢查服務。

Company Introduction:

HKMI Inspector will travel to the used car dealers or private seller's home to examine the motor vehicle. The quality and thoroughness of our inspection service are never compromised by the nature of the mobile service, all of the HKMI inspection vans have been completely equipped with all necessary inspection tools such as hydraulic lifts, computerized testing and diagnostic equipment.

Our experienced professional inspectors will carry out a comprehensive "250+ point check" mechanical, electrical and body panel assessment on the vehicle. Upon the completion of the 250+ point motor inspection, all of the results will be detailed into a report that is layout into 6 partitions such that it will be easy for customers for follow.

Our 250+ point motor inspection consists of the complete driveline, which covers all components that connect the transmission, the engine, the driving axles, joint and drive shaft. Other areas that will be inspected includes the breaks, steering, cooling system, the battery, electrical system, A/C system, as well as other electrical accessories such as central locking and power windows. Our inspectors also check underneath the car on the exhaust system, wheel bearings, suspension, as well as looking at the frame structure for any signs of previous damages caused by rust, flood or any accident. If previous damages have been noted, we will provide an estimate on the extent of the previous damage along with an evaluation on the quality of the repairs.

香港智能城市有限公司

Hong Kong Smart City Ltd.



Hong Kong Smart City Ltd.

Unit 1005, 10/F, Building 19W, No.19 Science park west avenue,

Hong Kong Science Park, Pak Shek Kok, N.T

电 话 Tel: +852 2633 1250

电 邮 Email: hksc.ceo@gmail.com

网 址 Website: <https://hk-smart-city.com/>

公司简介：

香港智能城市有限公司(HKSC)在2017年成立,目前為香港市場提供電動車充電器管理和支付系統的解決方案,並在不同的住宅、商場和其他場所服務。

Company Introduction:

Hong Kong Smart City Ltd. (HKSC) was established in 2017. It currently provides solutions for electric vehicle charger management and payment systems for the Hong Kong market, they are served in different residences, shopping malls and other venues.

服务简介：

香港智能城市紧贴市场为客户不断开拓崭新产品和服务着称，竭诚满足不同客户的需要。

Service Information:

HKSC keeps up with the market and continuously developing new products and services for customers, and is dedicated to meeting the needs of different customers.



香港的士软件服务有限公司

Hong Kong Taxi APP Services Limited



eTaxi

香港九龙湾常悦道13号瑞兴中心7楼707室

Room 707, 7/F, Shui Hing Centre, 13 Sheung Yuet Road, Kowloon Bay, Hong Kong

电话 Tel: +852 2570 1680

电邮 Email: mkt.etaxihk@gmail.com

网址 Website: <https://etaxi.com.hk/>

公司简介：

e的士是由香港的士业议会相关机构及夥伴公司联营「香港的士软件服务有限公司」推出的一个的士应用程式平台，包括多个应用程式及管理平台系统。在有限资源下提升香港的士行业的科技和服务水平以配合时代的需要，推动香港发展成为智慧城市。功能包括司机登记及管理计分平台，升级Call台连网，即时路面资讯及交通消息、代寻失物、安全行程分享及乘客对的士司机评分和电子付款等。以GIS技术将乘客订单与司机和呼叫中心联系，配合监管多方向提升服务。为旅客创新租车服务，为本地乘客如轮椅车宠物，隧道等服务计费、司机计分奖赏回程单及监管功能，车主管理等多种的需要。我们的多个APP接口及网路平台，在Android，iOS手机APP及WeChat小程序吸引本地和世界旅游网接单

Company Introduction:

eTaxi is developed by Hong Kong Taxi app services limited which are established by the Hong Kong Taxi Council related organizations and associated companies, eTaxi is an online taxi app designed with high-quality transport and user-friendly direction as our utmost priority. We are committed to enhancing taxi service quality, offering the best passenger experience. Our platform is developed based on the ample support from the Hong Kong taxi industry and the taxi call station to the individual drivers.

Features include driver registration and management scoring platform, connecting to call station network, real-time road information, traffic news, lost and find the property, safe trip route sharing, passenger ratings of drivers, and electronic payment. GIS technology is deployed to connect passenger orders with drivers and call centers. The app target to improve services in multiple directions, enhancing passenger's satisfaction to include functions on to pick for wheelchair pets, tunnels and other services, driver scoring rewards return tickets and car owner management. Our multiple APP interfaces and online platforms on Android and iOS and WeChat app bring eTaxi to the global market by attracting the service co-operation with local and global travel websites.

服务简介：

e的士/GoAsia平台

Service Information:

eTaxi/GoAsia Platform

香港学森科技有限公司

Hong Kong Xuesen Technology Co., Limited

香港湾仔湾仔道165-171号乐基中心15楼1512室

Flat 1512, 15/F, Lucky Center, No. 165-171 Wan Chai Road, Wan Chai, Hong Kong

电 话 Tel: +852 3785 4100

公司简介：

香港学森是一家由自动控制和电力系统领域顶尖科学家创办的高科技公司，公司拥有自主研发和製造能力，我们以丰富的技术能力和商业经验与新能源行业的大企业合作。我们一直致力於为新能源行业提供技术解决方案，为氢燃料电池汽车氢电池发电系统产业化做出贡献，並提供其他先进、高效的系统化储能系统解决方案。

Company Introduction:

Hong Kong Xuesen is a high-tech company founded by top scientists in the field of automatic control and power systems, the company has independent R&D and manufacturing capabilities that we have rich technical competence and commercial experience to partner with the big players in the new energy industry. We have been engaging in new energy industry to provide technical solution to contribute industrialization of hydrogen fuel cell power generation system for hydrogen fuel cell vehicles and provide other advanced and high-efficient systematic energy storage system solutions. websites.

鸿利达模具有限公司

Hongrita Mold Ltd.



Hongrita

Precision Component (Zhongshan) Ltd.
鸿利达精密组件(中山)有限公司

广东省中山市翠亨新区中准道26号

No.26 Zhong Zhun Road, Cui Heng New District, Zhongshan City, Guangdong, China. 528451

电话 Tel: +86 755 2855 8266 Ext.8838

电邮 Email: ericlee@hongrita.com

网址 Website: www.hongrita.com

公司简介：

鸿利达自1988年始创于香港，现有员工1,680余人。目前已发展成为一家立足香港，深耕粤港澳大湾区，辐射东南亚乃至全球的企业集团。鸿利达凭借世界级高效能注塑方案、专业液体矽橡胶模具製作及注塑技术与一步法注拉吹技术，建立了多样化的客户群，为汽车，医疗，消费电子，个人护理及硬包装等行业提供全方位、一站式塑胶产品解决方案。

Company Introduction:

Hongrita was founded in Hong Kong in 1988 and has more than 1,680 employees. At present, it has developed into an enterprise group based on Hong Kong, deep cultivated in Guangdong-Hong Kong-Macao Greater Bay Area, covering Southeast Asia and even the world. Hongrita has established a diversified customer with world-class efficient injection molding solutions, professional liquid silicone rubber mold manufacturing and injection molding technology and ISBM (one-step Injection, Stretch and Blowing Molding), providing comprehensive and one-stop plastic product solutions for automotive, medical, consumer electronics, personal care and hard packaging industries.

服务简介：

1. 双色产品 2K Seal



密封件（汽车安全件）
出模穴：8+8
週期：24S
材料：PA66+GF + TPV；

2. 三色产品 3K part



阳光雨量传感器（RLS 3K Housing），依照雨量的大小调整雨刮器的刮速、通过判断当前阳光强度，细微调整车内温度、根据环境光照度支持仪表盘显示亮度的调节；出模穴 4+4，週期 22s，材料：PC+PC+PC

3. 内饰件双色与三色产品 2K and 3K part



汽车内饰件，按钮(Button)
出模穴：4+4/ 4+4+4；
週期 35s，
材料 PC+ABS/ PC+PC +ABS
最终产品需要电镀



空调旋钮
出模穴：4+4/ 4+4+4；
週期 35s，
材料：PC+ABS+TPV
最终产品需要电镀

4. 油门踏板与汽车钥匙 Accelerator pedal & key



出模穴：2/4/8，
材料：PA12，ABS +PC；PA66GF 40；

启荣电子软件开发有限公司

Inspiring Light Electronics Software Development Limited



Unit 501, 5/F., Enterprise Place No 5 Science Park West Avenue

电 话 Tel: +852 2646 0832

电 邮 Email: iles.wingngan@gmail.com

网 址 Website: <https://www.inspiringlightes.com/>

公司简介：

启荣电子软件开发有限公司(启荣电子)成立于2013年5月，我们公司主要业务是开发电动车充电站及电动车充电收费亭，而系统亦能同时支援 E-payment system 例如：八达通，微讯支付 及 Visa payWave。而本公司另一主要收入来源是协助政府部门开发软件及硬件设计，相关部门 警报处、惩教处、海事处及机电工程处等。所以我们公司有自家开发软件及硬件的能力，项目管理及需求能清楚实行及表达。

自成立至今，我们曾经向创新科技局、香港生产力促进局及科学园区内的公司徵询宝贵的专业意见，从而张我们公司的硬体产品及其後勤平台提高至国际级水平。得到他们协助和支援，另我们达至加快发展业务及优化稳定性。

除此以外本公司亦具备软件及硬件的自家开发能力，所以能同时支援各种软件平台作为本公司产品的合作伙伴

Company Introduction:

Inspiring Light Technology Limited was established in May 2013.

Our company's main business is to develop electric vehicle charging stations and electric vehicle charging toll booths. The system can also support E-payment systems such as Octopus, WeChat Pay and Visa payWave at the same time.

The company's other main source of income is to assist government departments in developing software and hardware designs. Relevant departments: the Department of Warning, the Department of Corrections, the Department of Marine Affairs, and the Department of Electrical and Mechanical Services. Therefore, our company has the ability to develop software and hardware by itself, and project management and requirements can be clearly implemented and expressed.

Since its establishment, we have consulted the Innovation and Technology Council, the Hong Kong Productivity Council and the companies in the Science Park for valuable professional advice, so as to develop our company's hardware products.

In addition, the company also has its own software and hardware development capabilities, so it can simultaneously support various software platforms as partners of the company's products.

天祥公证行有限公司

Intertek Testing Services Hong Kong Ltd.

intertek
Total Quality. Assured.

香港九龙青山道576号製衣中心2楼
2/F Garment Centre, 576 Castle Peak Road, Kowloon, Hong Kong
电话 Tel: +852 2173 8888/ 8530
电邮 Email: hkmarketing@intertek.com
网址 Website: www.intertek.com.hk

公司简介：

Intertek是全球领先的全面质量保障服务机构，以专业、精准、快速、热情的全面质量保障服务为客户保驾护航。Intertek香港成立於1973年，为纺织品及服装类别的首批客户提供测试服务。Intertek香港其後将服务扩展至玩具、食物、电子电器产品、家居、儿童护理产品、零售及贸易等行业。Intertek香港拥有超过50年的测试、检验和认证经验，现已成为香港最大的实验室之一，拥有先进既设备以及广泛领域的深入知识及经验。作为测试及认证服务的行业领导者之一，我们将继续协助香港及不同地区成熟以及新兴行业将业务扩展到全球。

Company Introduction:


Intertek is a leading Total Quality Assurance provider to industries worldwide. Intertek Hong Kong was established in 1973, offering testing services to its first customers in the textiles and apparel category, then one of Hong Kong's pillar industries. It soon expanded its services to include toys, footwear and electrical products. With more than 50 years of testing, inspection and certification experience, Intertek is now one of the largest laboratories in Hong Kong, possessing state-of-art equipment and in-depth knowledge and experience across a wide array of sectors. Intertek Hong Kong, as the Centre of New Technology and Knowledge, provides comprehensive quality solutions to leading global and local companies matched by superior customer service for continuous business success.

服务简介：

Intertek香港提供全面的品质保证、产品安全、电磁相容性EMC、性能、化学测试和认证服务使世界各地的製造商能够进入不同的市场，协助业界拓展商机。Intertek 香港亦提供电动车供应设备的测试服务，我们根据ETL相关最新标准、ENERGY STAR、IECEECB / CE及中国GB / T等标准进行测试，让我们的客户可以在全球不同市场发展及推出产品。

Service Information:

Intertek Hong Kong provides comprehensive quality assurance, product safety, electromagnetic compatibility (EMC), performance and chemical testing and certification services, that enable manufacturers worldwide to reach the markets necessary to capitalize on competitive business opportunities. Intertek Hong Kong also provides the testing services for Electric Vehicle Supply Equipment. We conduct the testing based on the latest standards for ETL listing, ENERGY STAR, IECEE CB Scheme / CE and China GB/T standards such that our customers can expand their products to the global market.



intertek
Total Quality. Assured.

INTERTEK HONG KONG

**ELECTRIC VEHICLE
SUPPLY EQUIPMENT
TESTING AND
CERTIFICATION SERVICE**

Validate the Safe Use of Electric Vehicle Charging Systems and EV-Related Products and Components with Electric Vehicle Supply Equipment (EVSE) Testing

CONTACT US
Tel: +852 2173 8888/ 8530
Address: 2/F, Garment Centre, 576 Castle Peak Road,
Kowloon, Hong Kong SAR, China

Intertek - All rights reserved. EL-EVSE-V1-0223E

JAB 服务有限公司

JAB Service Limited

香港北角英皇道335-341号恒生北角大厦13楼1304-5室

Room1304-5 Hang Seng North Point building, 335-341 King's Road, North Point. HK

电 话 Tel: +852 91688156

电 邮 Email: Jabesld@gmail.com

公司简介：

JAB服务有限公司於2012年成立於香港是一间私人有限公司：为香港、澳门市场的公共部门、汽车维修车间、教育场所提供维修设备。 根据我们过去在设备行业的经验，专注於以实惠价格为客户提供定制服务，服务质量以及董事和员工的承诺，确保我们的客户继续与我们紧密合作。

Company Introduction:

JAB Service Limited, a private Limited company in Hong Kong since 2012, provide workshop equipment for commercial workshop, Public Sector, vehicle workshop, education site in Hong Kong, Macau market. In our past experience in the workshop equipment industry, we specialize in providing our clients with tailored service at an affordable price. Our client benefit from a bespoke service that is tailors to each customers need. Quality of server and the commitment of the directors and staff have ensure that our customer retention rat is among the highest in the workshop equipment industry.

服务简介：

自 2013 年以来，我们很高兴成为博世诊断设备的授权经销商，这些设备包括废气排放分析仪、汽车举升机、制动测试仪、车轮维修设备、诊断分析仪。电池更换设备；我们是授权服务提供商，为不同的客户群处理洗车系统、润滑油管理系统等。

Service Information:

We glad to be an Authorized Dealer of Bosch's Diagnostic equipment in our market since 2013, which is the Exhaust emission analyser, vehicle lift, brake tester, wheel service equipment, diagnostic analyser. battery changer workshop pit equipment; We are the authorized service provider to handle car wash system, lube oil management system, pit protective cover..etc for different clients base. Our company is includes product sales and after-sales service, not limit to equipment calibration and technical data support.



精美汽车工业有限公司

Jing Mei Automotive Limited



香港荃湾海盛路3号TML广场 8楼 C6室

Unit C6, 8/F TML Tower, 3 Hoi Shing Road, Tsuen Wan, Hong Kong

电话 Tel: +852 2281 6900

电邮 Email: jmasales@jma.com.hk

网址 Website: <http://www.jma.com.hk/>

公司简介：

精美汽车工业有限公司，简称“JMA”，成立于1998年。董事长陈伟聪先生秉承父亲陈礼信先生的塑料电镀技术及严谨务实的工作作风，活用表面处理技术和资源，以诚信务实的作风、敬业创新的态度、追求卓越的精神，成功在汽车零部件行业中开拓新业务。

伴随着汽车市场的前进发展脚步，JMA团队走过了二十年的创业拼搏历程，在全球汽车零部件行业内，成为汽车厂商的首选供货商。至今，JMA累计产销各类汽车门把手3亿多件、外饰7千多万件，产品远销至欧、美、日本。在巩固和发展国际市场的同时，不断开拓国内市场，逐步建立起全球营销和生产体系。

回顾历史，JMA从第一条生产线开始，坚持向客户提供优质的产品、卓越的服务。站在企业发展第三个十年的新起点，我们将全面贯彻落实『诚信务实、创新进取、同心同德、共享共赢』的核心理念，为建设具有国际竞争力的“多元化汽车零部件供货商”的目标而努力奋斗。

Company Introduction:

Jing Mei Automotive Limited (hereafter stated as "JMA") was set up by Mr. Ricky Chan Wai Chung in 1998. Under the guidance of Mr. Chan Lai Shun, Mr. Ricky Chan flexibly applied the electroplating technology, and with his dedicated and innovative attitudes, successfully developed new business in automotive parts industry.

After 20 years of development with the advancing steps in automotive markets, JMA has become the preferred supplier of automotive manufacturers in global automotive parts industry. Until today, JMA has produced over 300 million automotive door handles of various kinds, over 70 million external decorations, which have been sold to Europe, America and Japan. While consolidating and developing international markets, we constantly expand domestic market to establish a global marketing and production system step by step.

JMA has always insisted on providing superior products and service to customers from the first production line. As we enter the third decade of the company's development, we will comprehensively implement the core concept of "integrity & pragmatism, be innovative & progressive, same heart & same value, sharing & win-win", aiming at constructing a "diversified automotive parts supplier" with international competitiveness.

金页（香港）有限公司

Kam Yip (Hong Kong) Limited

香港九龙观塘创业街36号华基中心17楼1703

Room 1703, 17/F, Ricky Centre, 36 Chong Yip Street, Kwun tong, Kowloon

电话 Tel: +852 2344 5528

公司简介：

金页（香港）有限公司成立於2006年，是一家致力於为汽车、巴士、高铁等集体运输交通工具提供车载多媒体资讯娱乐信息系统的科技公司。2009年至2015年，公司与中科院、香港生产力促进局、德国SMSC共同合作研发MOST150多媒体资讯娱乐信息系统，这套系统基於MOST150技术，採用光纤网络传输方式，可以提供高带宽高速率，满足高清视频及网络连接的要求，同时满足车规级别的严苛EMC测试标准。目前，公司已经成功将这套系统推广至粤港澳大湾区，並安装在跨境巴士上运行。

Company Introduction:

Kam Yip (Hong Kong) Limited, founded in 2006, is a technological enterprise that offers vehicle multimedia infotainment systems to cars, buses, high speed rails and other public transportations. We worked with the Chinese Academy of Sciences, the Hong Kong Productivity Council and SMSC to develop MOST 150 multimedia infotainment systems, through applying fiber-optic network communication for higher bandwidth and speed. As of now, MOST has been successfully implemented on cross-border buses, and is promoted to the Greater Bay Area.

服务简介：

MOST150多媒体资讯娱乐信息系统

MOST作为一种专门用於车内网络的界面标准，可使汽车或其他交通工具内的多媒体组件能够互相通信连接，MOST光纤网络传输系统使用光纤来进行主乾性的大量、高速传输，可使数据传输率远远超过之前的Vehicle-bus技术。此外，MOST互联网系统採用工业级设计，分别通过了欧盟ECE可靠性测试（包括显示屏碰撞测试和显示屏阻燃测试）与EMC电磁兼容测试，这些测试使MOST互联网系统达到国际标准。MOST光纤互联网系统可以实现巴士内数十个屏端进行多媒体播放及集中化管理，支持多媒体信息流点播、组播，可随时控制全车音视频播放，优先控制广播並且实现广播与影音的自动切换。另外，採用数字编码及光纤传输技术为乘客提供高品质的视觉感受。

Service Information:

MOST150 multimedia infotainment system

As an interface standard specifically used for in-vehicle networks, MOST enables multimedia components in automobiles or other vehicles to communicate with each other. MOST optical fiber network transmission system uses optical fiber to carry out a large number of high-speed transmissions, which can make the data transmission rate far exceed the previous Vehicle-bus technology. In addition, the MOST Internet system adopts an industrial-grade design and has passed the EU ECE reliability test (including the display screen crash test). International standards are met after conducting display flame retardant test and EMC electromagnetic compatibility test. MOST Fiber Optic Internet System can perform multimedia playback and centralized management on dozens of screens in buses, supports multimedia information stream on-demand and multicast, and controls the audio and video of the whole vehicle at any time. Video playback, priority control of broadcasting and automatic switching between broadcasting and video are enabled. In addition, digital coding and optical fiber transmission technologies are used to provide passengers with high-quality visual experience.

健大企业有限公司

Kenta Enterprise Co. Limited



香港九龙官塘鸿图道55号幸运工业大厦11楼B & C室

Flat B & C, 11/F Winner Factory Building, 55 Hung to Road, Kwun Tong Kowloon, Hong Kong

电 话 Tel: +852 2341 1597

电 邮 Email: info@kenta.com.cn

网 址 Website: <https://www.kenta.cn/>

公司简介：

健大企业有限公司专业从事精密塑胶注塑产品的开发和製造，一九八五年於香港成立，下设东莞工厂和昆山、山东工厂。公司先後通过了UL、ISO9001、ISO14001和IATF16949认证

Company Introduction:

Founded in 1985 in Hong Kong, KENTA has now grown into a multi-national corporation specializing in the R&D, tooling fabrication, and production of components in precision injection molding.

With multiple manufacturing sites in Mainland China, Kenta has achieved internationally recognized standards approvals, such as UL, ISO9001, ISO14001 and IATF16949

服务简介：

凭藉在汽车领域的二十多年经验，健大为汽配部件客户提供了全面的解决方案，确保质量稳定及具有成本效益--由较大形的一系列性项目：方向盘，点火线圈以及水/油泵等精密部件，到高效能的微注塑件等等都能为客户提供最优设计及生产。健大是世界上多间知名OEM和一级汽车供应商的主要生产供应商。各项完备的资源及基础设施让我们可以专注於汽车市场的重要要求-零缺陷要求，从而降低整体成本。

总体解决方案包括谘询服务---材料和工序选择、DFM模拟缺陷、试验性开发---包括工程软模具或3D打印样品、运用科学注塑试模DOE找出的各项最佳参数及以跟据技术规格建议的测量方法。健大是标准和非标准注塑的专家，包括精密注塑，包胶注塑，嵌件模具，多部件注塑和微型技术。同时，健大对高温处理及玻璃纤维树脂的特点也十分熟悉。

Service Information:

With more than a decade experience in automotive field, Kenta offers a total solution, lifecycle approach, to ensure time, stability, quality and cost effective solutions for the automotive industry, some examples of past success are, control module, ignition core, water/oil pumps and many other precision parts, as well as integration to a wide range of mechanical micro parts for high functionality even in the most precise devices.

Kenta has been a key supplier to some of the most well known automotive OEMs and tier 1 suppliers in the world. Kenta's infrastructure of complete resources allows our clients to focus on what's most important to the automotive market, zero defects, and lowering overall costs Total solutions included advisory services, including material selection and construction, DFM to simulate imperfections and failures, pilot development including prototypes tooling or 3D printing samples, mold trials involving scientific DOE to find ideal parameters and last but not least measurement protocols according to technical specifications. Kenta is a specialist for standard and non-standard types of injection molding including Precision injection molding, over molding, insert molding, multi-component injection molding and micro-technology. Kenta is also familiar with high temperature and glass filled fiber resin characteristics.

亚图商业资讯有限公司

MapAsia Business Intelligence Limited



香港九龙湾常悦道13号瑞兴中心7楼707室

Room 707, 7/F, Shui Hing Centre, 13 Sheung Yuet Road, Kowloon Bay, Hong Kong

电 话 Tel: +852 2740 9680

电 邮 Email: sales@mapking.com

网 址 Website: www.mapking.com

公司简介：

MapAsia Business Intelligence Limited是MapKing的全资附属子公司。服务於亚太区域的智慧城市服务专家，在亚洲区域提供一系列领先的智慧网联出行服务，在香港、澳门、东南亚等地为计程车、客车及物流车队提供车联网、车队管理及即时交通资讯服务，为车辆提供优化路径，提升管理及出行体验，支援下一代的出行服务。

Company Introduction:

MapAsia Business Intelligence Limited is a subsidiary of MapKing. An Asian leading smart city services provider headquartered in Hong Kong, serve taxis, logistics, public transit services in Hong Kong, Macau and South East Asia region with advanced connected vehicles services, fleet management and live traffic information services. Provide optimized routes for vehicles improve management and travel experience, and support the next generation of travel services.

服务简介：

腾讯实时交通路况服务项目

Service Information:

Tencent Live Traffic Speed Service Project

国图顾问有限公司

MapKing International Limited



香港九龙湾常悦道13号瑞兴中心7楼707室

Room 707, 7/F, Shui Hing Centre, 13 Sheung Yuet Road, Kowloon Bay, Hong Kong

电 话 Tel: +852 2740 9680

电 邮 Email: sales@mapking.com

网 址 Website: www.mapking.com

公司简介：

国图顾问有限公司成立於1996年，专业从事地理资讯系统（GIS）技术开发与提供商业应用服务。为智慧交通资讯系统、车队管理等提供数据与技术支持。我们在互联网、物流和交通业务领域为世界知名公司和政府机构提供地图、实时交通...等服务。

Company Introduction:

MapKing International Limited established in 1996 which is specialized in applications of geo-spatial technologies for intelligent city (i-City) with focus in map related cutting edge mobile and internet applications. Under MapKing i-City initiatives, we provide data, software and technical services for applications in LBS. We serve world top MNCs and government bodies in internet/ mobile/ telecoms / logistics and traffic business sector with our map, live traffic, navigation , public transit, business information and e-merchant, Over the years, with the contribution our professional team in the scientific and technological innovation development, MapKing has honored numerous awards by governments and the industry.

服务简介：

车队管理追踪系统

车载互联导航系统

Service Information:

Fleet Management and Tracking System

Connect Navigation System

车师傅有限公司

Master Car Limited



香港中环德辅道中 19 号环球大厦2404 室

Flat 2404, 24/F, World Wide House, 19 Des Voeux Road, Central, Hong Kong

电 话 Tel: +852 9233 5529

电 邮 Email: support@mastercar.hk

网 址 Website: <https://www.mastercar.hk/>

公司简介：

「车师傅」作为首个为汽车维修师傅和车主的互动平台手机应用程序。车主可透过「车师傅」寻找合适的维修师傅或车行进行报价，服务包括机械维修、美容服务、文件代办……等等，同时平台亦给予师傅扩展业务的机会，快人一步进行报价。

Company Introduction:

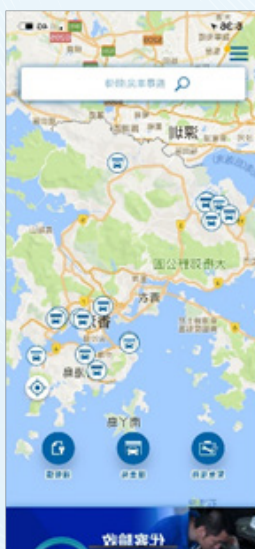
Master Car is the first interactive platform mobile application for car maintenance masters and car owners. Car owners can find suitable repairers through our platform, services include mechanical maintenance, beauty services, document agency, etc. The platform also offers service providers an opportunity to expand their business to wider audience.

服务简介：

车师傅介面方便清晰，同时亦提供强大功能方便「客户」和「车房」进行配对，除了车房资料、紧急服务、搵车师傅报价外，亦设有即时通讯、订单系统、车房评价等实用功能…全港车房报价，尽在弹指之间！

Service Information:

The interface of the Master Car is convenient and clear, and it also provides powerful functions to facilitate the matching between "customers" and "garages". In addition to garage information, emergency services, and quotes from the car master, it also features instant messaging, order system, garage evaluation, and other practical features. Quotations for garages in Hong Kong are at your fingertips!



名商科技有限公司



MingShang Technology Co.,Ltd

惠州市惠阳经济开发区惠南大道杨屋三路名商科技产业园
Mingshang Industrial Area, Huinan Road, Huiyang District, Huizhou, China
电话 Tel: +86-0752-3500868
电邮 Email: technology@mingshang.com
网址 Website: www.mingshang.com

公司简介：

名商科技有限公司是一家以车载安全、智能网联软硬一体化系统集成商。集产品研发、生产、销售、服务于一体的国家高新技术企业；拥有教授、博士等专家团队，在香港、深圳、厦门、白俄罗斯设有研发分公司，与国内外名校联合成立名商研究院，公司主营AVM、ADAS、DMS、BSD高级辅助驾驶系统，及T-BOX、行驶记录仪等车联网产品，拥有车联网运营平台及研发团队。

产品畅销全球，在国外与福特、GMC、IVECO、BENZ、DOMETIC、UPS、联邦快递等建立合作关系，在国内是宇通、东风商用、三一、比亚迪、福龙马、金龙等知名车厂一级供应商。

Company Introduction:

Mingshang Technology Co., Ltd. is an integrated software and hardware system integrator for vehicle safety and intelligent network connection. It is a national high-tech enterprise integrating product development, production, sales and service; it has a team of professors, doctors and other experts, and has R&D branches in Hong Kong, Shenzhen, Xiamen, and Belarus. The company's main AVM, ADAS, DMS, BSD advanced driving assistance systems, and T-BOX, driving recorder and other vehicle networking products, has vehicle networking operation platform and R & D team.

The products sell well all over the world. We have established cooperative relations with Ford, GMC, IVECO, BENZ, DOMETIC, UPS, FedEx, etc. in foreign countries, and are the first-tier suppliers of Yutong, Dongfeng Commercial, Sany, BYD, Fulongma, King Long and other well-known car manufacturers in China.

服务简介：

- 一、ADAS、DMS、AVM、BSD、AEB等高级辅助驾驶系统
- 二、T-BOX、行驶记录仪等车联网产品
- 三、AI摄像头、无光夜视摄像头等
- 四、智能座舱系统
- 五、智慧解决方案（环卫车、渣土车、商用车、起重机、两客一危等）
- 六、车联网运营服务提供商及平台定制开发服务商
- 七、摄像头、显示器、录像机等车载安全监控产品

Service Information:

1. Advanced driving assistance systems such as ADAS, DMS, AVM, BSD, AEB, etc.
2. IoV products such as T-BOX and driving recorder.
3. AI camera, non-light night vision camera, etc.
4. Smart cockpit system.
5. Smart solutions (sanitation trucks, muck trucks, commercial concrete trucks, cranes, two passengers and one danger, etc.)
6. IoV operation service provider and platform custom development service provider.
7. Cameras, monitors, DVR and other vehicle security monitoring products.



天籟航讯

NAVI DIGITECH CO.

香港油塘油塘工业大厦2座地下C1
Unit C1, G/F, Blk2, Yau Tong Ind. Bldg. Yau Tong, HK
电话 Tel: +852 97355868
电邮 Email: naviautomec@gmail.com
网址 Website: www.navi.hk

公司简介：

NAVI 天籟是由数位从事汽车维修专业技师在1996年成立，以重视专业、服务、品质经营理念。

我们选用世界名厂品牌产品，让消费者感受各项产品的实用性能，为车主打造最美好座舱的最佳体验。

Company Introduction:

ND engaged in supply, trading and service of Automobile Active Safety System Retrofit Industry in Overseas markets.

服务简介：

Panacoat 汽车车身镀膜

"松下机能材料" 致力於研究物理化学特性更优异的材料 Si-O 聚矽氧烷 透过与空气接触，产生水解缩合反应，表乾速度快且成膜性佳，具耐高温、抗紫外线、抗氧化性、耐候性、耐久性、高疏水性。

Service Information:

Panacoat Automotive Body Coating

"Panasonic Materials" is committed to the research of materials with better physical and chemical properties. Si-O polysiloxane undergoes hydrolysis and condensation reactions through contact with air. It has fast surface drying speed and good film-forming properties. Oxidation resistance, weather resistance, durability, high hydrophobicity.



Ultra Glass Coating
車のコーティング剤

The science of Shimmering
最強の艶・撥水

Panacoat < Fressera D-CSPX >
フレッセラ D-CSPX

最先端ナノテクノロジー採用
ナノ・ハイブリット型ガラスコーティング
は超撥水・硬質被膜・高い艶感・耐久性を併せ持つ日本製のガラスコーティング剤です。

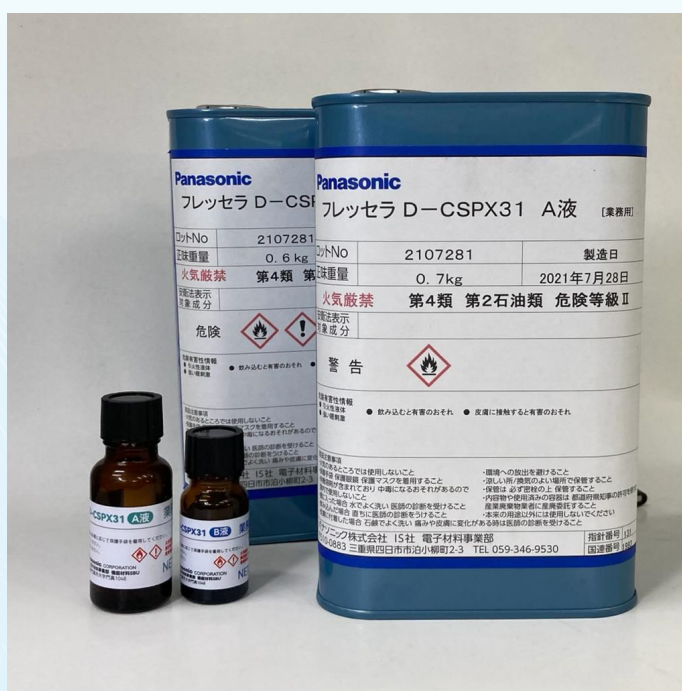
- 流れ落ちる超撥水被膜
- 無機質被膜が生み出す高耐久性
- 高次元の耐スリ傷性と防汚性

製造元：
Panasonic CORPORATION
パナソニック株式会社
インダストリアルソリューションズ社
電子材料事業部
機能材料SBU

リポルト独自
紫外線
ガード

優れた
防汚性
耐久性

超
撥水
滑水



新创新技术有限公司

New Innovation Technology Limited

香港新界沙田小沥源安平街6号新贸中心A座20字楼2006室

Flat 2006, 20/F, Blk A, New Trade Plaza, No. 6 On Ping Street, Shatin, New Territories, Hong Kong

电 话 Tel: +852 2446 2399

电 邮 Email: business@ni-nt.com

公司简介：

新创新目前主要致於电动商用车的研发，研发项目具备人工智能辅助驾驶、无人驾驶及远程控制技术，将建设香港首个融合单车智能、车路协同、5G远程控制等多种技术在內的无人驾驶、智慧出行方案，为打入无人驾驶、智能交通的中国赛道不遗余力。新创新在商用充电网络的开发方面，大力发展DC直流、快速充电弓、後备插入式快速充电器等快速充电设施，将打破香港充电网络传统格局。

Company Introduction:

New Innovation Technology Limited is currently mainly related to the research and development of electric commercial vehicles, which are equipped with artificial intelligence-assisted driving, driverless and remote control technologies, and will build Hong Kong's first driverless and smart travel solution that integrates various technologies such as bicycle intelligence, vehicle-road coordination, and 5G remote control, sparing no effort to enter the Chinese track of driverless and intelligent transportation. In terms of the development of commercial charging networks, the development of fast charging facilities such as DC DC, fast charging pantographs and back-up plug-in fast chargers will break the traditional pattern of Hong Kong's charging network.

新灵电子技术开发有限公司

New Spirit Technology Ltd.

香港九龙观塘伟业街166号嘉灵大厦1楼

1/F, Karin Building, 166 Wai Yip Street, Kwun Tong, Kln., HK

电话 Tel: +852 6189 9225

电邮 Email: jason.wong@newspirit.com.hk

网址 Website: www.karingroup.com/NST/



新靈技術
NST

Powered by the KARIN Group

公司简介：

拥有超过 25 年的电子元件分销和电子应用开发经验，新灵电子技术开发有限公司（嘉灵集团成员）提供广泛的电子元件和工业材料，例如 BLE5.0 SoC、汽车连接器、汽车级晶体、LCC电容及HPC电池（复合脉冲电容），销售点分佈中国主要城市，包括深圳、上海、北京、重庆、长沙、青岛、西安、厦门、绵阳、佛山和河南。此外，我们与业内战略合作夥伴和供应商合作，提供全面的、增值的、定制化的IC软件应用设计解决方案和硬件应用解决方案。应用层麵包括多功能智能玩具、无线产品和汽车产品。

Company Introduction:

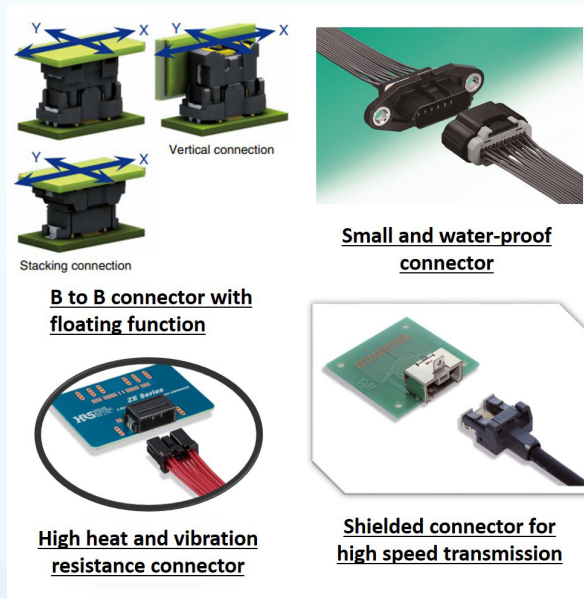
With over 25 years experience in electronic components distribution and electronic applications development, New Spirit Technology Ltd. (A member of KARIN GROUP) offers a broad range of electronic components and industrial materials such as BLE5.0 SoCs, Automotive connectors, Automotive grade crystals, LCC and HPC battery with wide spread of PRC coverage (Shenzhen, Shanghai, Beijing, Chongqing, Changsha, Qingdao, Xi'an, Xiamen, Mianyang, Foshan and Henan). Besides, with teaming up with strategic partners and suppliers in the industry, we provides comprehensive, value-added and customized IC software application design solution and hardware application solutions. The application can be applied to Smart toys, wireless products and Automotive products.

服务简介：

- BLE5.0 SoC / BLE5.0 模组 (CE, FCC, Rohs)
- 汽车连接器 (耐高温, 耐振, 小型, 防水)
- LCC电容模组 (耐极端温度, 高安全性, 快速充电、放电)
- HPC 电池 (耐极端温度, 高安全性)

Service Information:

- BLE5.0 SoC / BLE5.0 module (CE, FCC, Rohs)
- Automotive connectors (High heat and vibration resistance, small and water-proof)
- LCC module (Resistant to extreme temperatures, high safety)
- HPC Battery (Resistant to extreme temperatures, high safety)



汇本企业有限公司

Prime Capital Enterprises Ltd



香港九龙湾展贸径1号九龙湾国际展贸中心B3层 / 香港九龙湾启祥道9号信和工商中心地下2-5号舖
Basement 3, KITEC, 1 Teradmart Drive, Kln Bay H.K. / Shop 2-5, G/F, Sino Ind. Ctr, 9 Kai Cheung Rd, Kln Bay, H.K.
电话 Tel: +852 2836 3377
电邮 Email: info@emaxautomall.com.hk, info@kbia-msc.com.hk, info@goldenwrap.hk, info@hkbyd.com.hk
网址 Website: www.emaxautomall.com.hk, www.kbia-msc.com.hk, www.goldenwrap.hk, www.hkbyd.com.hk

公司简介：

汇本企业有限公司有多年汽车展销场管理及营运经验，致力提供舒适而时尚的汽车展销场所，能够给予售卖二手车或/及水货车的车行、商户一个具备参展及售销的一体化交易平台。本公司更致力发展周边的车辆配套服务包括设有香港运输署指定车辆验车中心、车辆维修服务、车辆美容服务及售卖全新车。

服务简介：

1. 九龙湾综合名车展

佔地15万平方尺，可容纳展销车1000辆，是香港最大规模室内二手车展览场地。

2. 九龙湾汽车维修中心

(i) 运输署指定车辆验检中心

KBIA 荣获香港运输署委任指定车辆测试中心。本中心配备最先进的MAHA检验设备，并由专业而高效的技师主理。

(ii) 专业维修服务

佔地4万多平方尺，能同时容纳超过80部汽车，中心还具备15部升降积台、洗车房及大修房，为客人提供最有效率和具质素的维修服务。

3. 黄金甲

获得Proflim在香港及澳门区独家代理。我们继承Proflim 的远景、传统及手工艺，提供最好服务予客人。

*Proflim 的车膜均有IWFA国际车膜生产协会证书及ISO9001国际质量管理体系认证。Proflim 也是各大车膜品牌代工生产商。

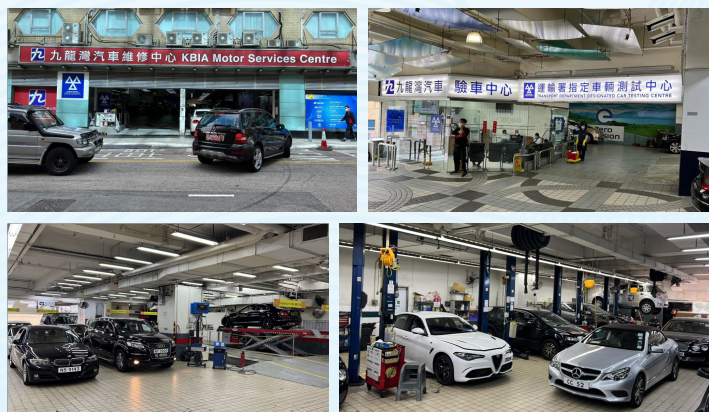
4. 比亚迪香港授权分销商

在2017为汽车品牌比亚 香港分销商，主要销售比亚迪全新电动车。

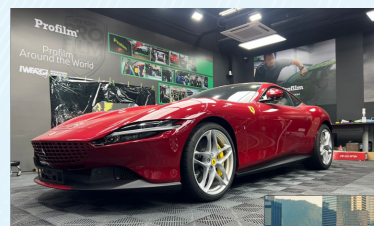
1. 九龙湾综合名车展



2. 九龙湾汽车维修中心



3. 黄金甲



4. 比亚迪香港授权 分销商



跃兔能源有限公司

Rabbit Energy Limited



九龙红磡德丰街22号海滨广场二座11楼1103室

Unit 1103, 11/F, Two Harbourfront, 22 Tak Fung Street, Hung Hom, Kowloon, Hong Kong

电 话 Tel: +852 2960 2388

电 邮 Email: enquiry@rabbit-energy.com

公司简介：

一家以通过建立生态系统来帮助移动出行电动化为使命的公司。

从2022年开始，我们努力透过与最好的电动汽车充电品牌合作，开发方便的软体来提供最好的公共电动汽车充电基础设施。

除了电动汽车充电基础设施之外，我们还专注于丰富整个电动汽车价值链的服务，包括车辆管理、电池和增值服务。

Company Introduction:

A company with a mission to help electrification of mobility through ecosystem establishment.

Started in 2022, we strive to provide the best public EV charging infrastructure through partnering with the best EV charger brands and developing the most user friendly software platforms.

On top of the EV charging infrastructure, we focus on enriching services along the whole Electric Vehicle value chain, including Vehicle management, Battery and Value added services.

服务简介：

使用最先进、最可靠的充电桩品牌，建立公用电动汽车充电基础设施，提供针对各种使用场景的最便捷充电服务。

采用人性化的流程，配合最新软件的部署和硬体的支援，保证用户体验。

Service Information:

Establishment of public EV charging infrastructure with technologically advanced and reliable charger brands, providing ultra convenient charging speeds tailored for each usage scenarios.

User experience is also guaranteed with well thought out processes, supported by deployment of the latest platform and hardware development.

国际汽车及航空工程师学会 - 香港有限公司

SAE HONG KONG
An SAE International Section

SAE International (Hong Kong) Limited

香港九龙达之路78号生产力大楼

HKPC Building, 78 Tat Chee Avenue, Kowloon, Hong Kong

电话 Tel: +852 2788 5418

电邮 Email: kelili@hkpc.org

网址 Website: <http://www.sae.hk.org/>

公司简介：

国际汽车及航空工程师学会 香港(原名：国际汽车工程师学会 香港) 於1999年12月正式成立。国际汽车及航空工程师学会- 香港得到国际汽车及航空工程师学会总部委员会的审批，现已成为国际汽车及航空工程师学会-香港区域分会，区域分会会务亦於二零零一年十月一日正式生效。香港区域分会现时拥有超过100位会员，他们均是业内的专业工程师、企业家、工业家及学术界，共同致力提昇汽车工程技术及工业的发展。会员当中的行政人员及工业家均具备相当丰富的经验特别是於中国内地，包括有关汽车工业的商业合作、合资、技术、产品开发、生产及质量管理等。国际汽车及航空工程师学会-香港区域分会成立目的是於工业界及学术界内推广SAE的会员会籍，以促进与国内及国际间会员的联络，建立及提供资讯服务的渠道及鼓励会员间的经验交流，从而凝聚一股推动香港汽车工业发展的动力。

Company Introduction:

The SAE-HK, a local group of the Society of Automotive Engineers (originally named), was inaugurated in December 2009. In recognition to the success of the past two-year operations, the SAE-HK Group was approved by the International Activities Committee (IAC) and the SAE Section Board to achieve the SAE-HK section Statutes, effective from 1 October 2001. This section is covering the geographical boundary of Hong Kong with more than 100 local members who are professional engineers, entrepreneurs, industrialists and educations dedicated to advancing the engineering of mobility system. For those business executive and industrialists, they are all being engaged in the automotive related business with extensive experiences in business partnership, joint ventures, technology and products development, production and quality management, etc. especially in mainland China. The establishment of the SAE-HK Section is to promote the SAE membership for both industries and academic to facilitate the networking among professionals nationally and internationally, to provide an information services channel and to foster experiences sharing among members so as to increase the momentum of the development of the automotive industry in Hong Kong.

金桥宏科技有限公司

SEDE HONG SCIENCE & TECHNOLOGY Co.,Ltd



香港铜锣湾糖街铜锣湾商业大厦3号16楼1602室
Room1602, 16/F, Causeway Bay Commercial Building, No.3
Sugar Street, Causeway Bay, Hong Kong
电 话 Tel: +852 6635 1823
电 邮 Email: kwokshanli@gmail.com

公司简介：

金桥科技有限公司是一家以AEB研发、氢能发动机、氢能压缩机、电动SUV车生产销售、高性能 车鼓、ADAS、DMS、高级辅助驾驶系统等智能化解决方案的公司。

产品畅销欧美及东南亚市场，深受客户青睐。

Company Introduction:

Sede Hong Science & Technology Co., Ltd. is a company that develops intelligent solutions based on AEB, hydrogen engines, hydrogen compressors, electric SUV vehicles, high-performance brake drums, ADAS, DMS, advanced driving assistance systems and other intelligent solutions.

The products sell well in European, American and Southeast Asian markets and are favored by customers.

服务简介：

- 一、ADAS、DMS、AEB等高级辅助驾驶系统
- 二、SUV电动车
- 三、高性能制动鼓
- 四、智能座舱
- 五、氢能发动机、轮毂电机、氢能压缩机

Service Information:

1. Advanced driving assistance systems such as ADAS, DMS, AEB, etc.
2. EV SUV CAR.
3. High-performance brake drum.
4. Smart cockpit.
5. Hydrogen engine, hub motor, hydrogen compressor



瑞昌汽车有限公司

Shui Cheong Motors Ltd.



香港新界沙田火炭坳背湾街38号华伟工业中心1楼5号
Unit 5, 1/F, Wah Wai Ind Centre, 38 Au Pui Wan Street, Fo Tan, Hong Kong
电话 Tel: +852 26918611
电邮 Email: sylvia@scmotors.hk
网址 Website: <https://scmotors.hk/>

公司简介：

瑞昌汽车有限公司，前身为瑞昌系统有限公司，成立于1980年。主要经营及制造改装专用车辆及客车零部件。因汽车业务扩大，于2014年成立瑞昌汽车有限公司。承接瑞昌系统之汽车制造及改装业务。并推动香港电车行业，研发适合香港用的电动车成为运输署认可的汽车生产商。

Company Introduction:

Shui Cheong Motors Ltd, formerly known as Shui Cheong System Ltd., was established in 1980. Mainly engaged in and manufacturing refitted special vehicles and bus parts. Due to the expansion of the automobile business, Shui Cheong Automobile Ltd. was established in 2014. Undertake the automobile manufacturing and modification business of Shui Cheong System. Promote the Hong Kong electric vehicles industry, develop electric vehicles suitable for Hong Kong and become an automobile manufacturer approved by the Transport Department.

服务简介：

瑞昌汽车有限公司在2016年。得到香港创新科技局的资助与生产力促进局合作，开始研发适合香港用的低地台小巴名为 Solution金路通。

金路通电动车在2020年完成全部欧盟认证。经过几年的努力设计、改良、测试、认证开始在香港试行。

金路通在2021年货车系列成功得到香港运输署获发类型评审合格证 (Type approval)。得到香港生产力促进局的支持，金路通电动车在香港行驶中的资料用网路传送至云端资料库，连接客户的控制中心以及手机，客户可以即时瞭解车辆行驶数据以及载客情况。为满足不同用户的要求，系统可以根据用户的要求改良及调教。

Service Information:

In 2016, Shui Cheong Motors Ltd received funding from the Hong Kong Innovation and Technology Council and, together with the Productivity Council begin to develop a low-floor minibus suitable for Hong Kong called Solution.

In 2020, Solution electric vehicles completed all EU certifications. After several years of hard work, design, improvement, testing and certification, Solution electric vehicles began to be trialed in Hong Kong.

In 2021, Solution electric vehicles successfully obtained the type approval certificate issued by the Hong Kong Transport Department for its truck series. With the support of the Hong Kong Productivity Council, All Solution electric vehicles' driving data in Hong Kong is transmitted to the cloud database. This is then connected to the customer's control center and mobile phone, so the customer can instantly understand the vehicle's driving data and passenger status. In order to meet the requirements of different users, the system can be adjusted and tuned according to many different requirements.



Smart Charge (HK) Limited

长沙湾长顺街 D2 Place 2 期6楼A室

Flat A, 6/F, D2 Place Two, 15 Cheung Shun Street, Cheung Sha Wan, Kowloon, Hong Kong

电话 Tel: +852 2888 0088

电邮 Email: enquiry@smartcharge.com.hk

网址 Website: www.smartcharge.com.hk

公司简介：

由香港电讯及中电集团合资的Smart Charge，致力为停车场、屋苑及各类机构用户解决电动车充电问题。

Company Introduction:

Smart Charge was established by HKT and CLP to provide one-stop EV-charging solutions for car parks, housing estates and various institutions users.



服务简介：

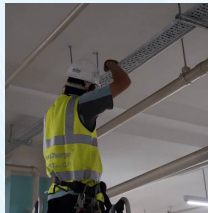
Smart Charge提供一站式电动车充电方案，由专业顾问团队就电力佈局、器材、实地视察、安装及测试，以及售後保养等提供全面支援，既省时又安全可靠。Smart Charge提供主要服务包括：

住宅私人充电服务

Smart Charge 团队会与大厦管理处及业主立案法团磋商，在住宅的停车场预先安装电力基础设施。及後客戶可按其使用习惯选择合适的月费服务计划，並由 Smart Charge 团队在客戶的车位安装电动车充电器。这些充电设施具有先进监控、自动化功能和智能网络管理系统，确保运作安全可靠。此外，Smart Charge 亦有为客戶提供“buy and own”服务。

商业方案

Smart Charge 为发展商及物业管理处提供专业和切合的电动车充电方案，为商场、商业大厦等物业设置完备的电动车充电配套设施。



公共充电网络

Smart Charge将在公共场所发展全面的充电网络覆盖，旨在为电动车用户提供便利的充电服务。服务以充电时间计算，收费简单。用户只需将电线插入车辆便可充电，並可透过八达通流动钱包或其他付款方式支付费用。



Service Information:

Smart Charge provides one-stop EV-charging solutions comprising advice on site layout issues, as well as equipment and installation recommendations, plus after-sales service – all to save time and eradicate hassle for our customers. Major service offerings include:

Residential charging service

Smart Charge engages with BMOs and IOCs to pre-install electrical infrastructure in residential car parks. Customers can choose a service plan according to individual vehicle use. An EV charger is installed in a customer's car parking space after he/she signs up to a monthly plan. Infrastructure comes complete with advanced supervisory, control and automation technologies, as well as an intelligent network management solution to ensure safe and reliable operation. Smart Charge also offers “buy and own” solutions.

Business solutions

Smart Charge provides a comprehensive EV-charging solution to suit the needs of residential areas, shopping malls, commercial buildings and other scenarios.

Public charging network

Smart Charge is developing far-reaching network coverage in public areas in order to offer a convenient EV-charging service for electric motorists. A simple pricing structure based on charging duration will be established. Users will be able to simply plug-in and charge their vehicles at various charging stations, then settle payment using Octopus or other means.

全速动力有限公司

Speed Up Moto Limited

香港九龙湾宏开道16号德福大厦12楼1204室

Room 1204, 12/F, Telford House, 16 Wang Hoi Road, Kowloon Bay, HK

电 话 Tel: +852 3113 8669

电 邮 Email: shirleyzhou123@126.com

公司简介：

全速动力成立於2013年，是专业的发动机/电机测试，设计，管理，标定的新型服务供应者。

Company Introduction:

Founded in 2013, Speed Up Moto Limited is a professional engine/motor testing, design, management, calibration new service provider.

服务简介：

发动机/电机解决方案和测试

公司的服务包括：

1. 为客户提高动力：通过安装，测试，标定的服务，为客户的原发动机提升性能，达到客户的要求；
2. 为客户减低风险：作为客户和原供货商之间的专业第三方，进行测试，令客户对所采购的产品的优点缺点更了解，提高信心，减低客户潜在风险；
3. 为客户节省成本：从为客户提供新部件设计，以至改善供应链，组织再生产，减少客户总体成本

Service Information:

Engine/Motor Solutions And Testing

The company's services include:

1. Improve power for customers: through installation, testing, calibration services, improve the performance of customers' original engines, and meet customer requirements;
2. Reduce risks for customers: as a professional third party between customers and original suppliers, conduct tests to enable customers to better understand the advantages and disadvantages of the purchased products, improve confidence, and reduce potential risks for customers;
3. Cost saving for customers: from providing customers with new component design, to improving the supply chain, organizing reproduction, reducing the overall cost of customers.

思普瑞云（香港）科技有限公司

Sprann (Hong Kong) Technology Co. Limited



九龙广华街48号广发商业大厦12楼6号办公室

Office no. 6, 12/F, Wealth Commercial Centre, 48 Kwong Wa Street, Kowloon, Hong Kong

电话 Tel: 0755-2650 1058 / 138 2316 5586

电邮 Email: Kevin.qin@sprann.com

公司简介：

思普瑞云（香港）科技有限公司成立於2022年，专业提供智能汽车工厂解决方案、技术服务、系统研发、工控电脑、数据采集设备。

思普瑞云（香港）科技有限公司依托大陆公司的研发经验，主要帮助汽车塑料零件企业进行系统智能化改造，协助多家汽车公司完成现场系统智能化升级服务，有丰富的塑料製造执行系统落地经验。

Company Introduction:

Sprann (Hong Kong) Technology Co. Limited was established in 2022 and specializes in providing solutions, technical services, R&D systems, industrial computers and data acquisition equipment in automotive companies.

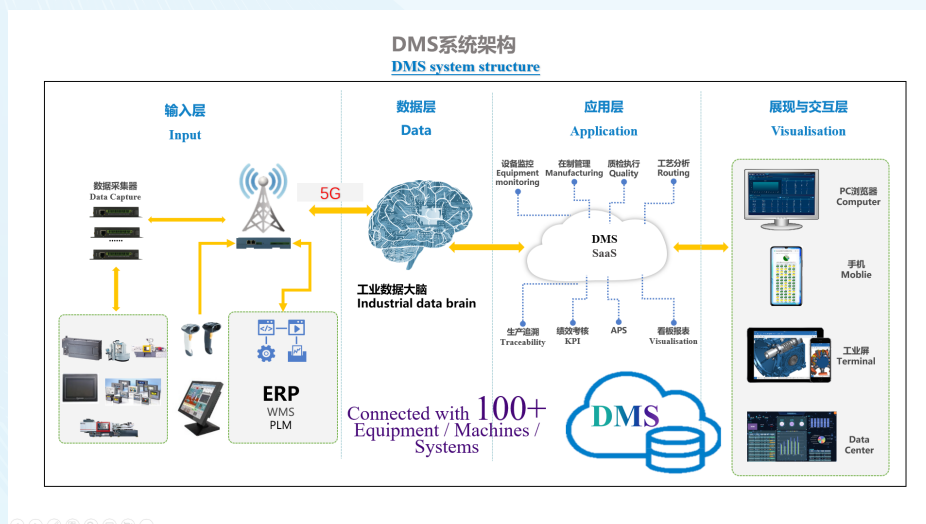
Based on the R&D experiences of Mainland company, Sprann (Hong Kong) Technology Co., Ltd, focusing in automotive plastic components companies to carry out smart vehicle system transformation, assisting automotive companies to complete the smart upgrading service of on-site systems, and having rich experience in the implementation of plastic manufacturing execution system.

服务简介：

思普瑞云“智慧工厂”整体解决方案涵盖以下产品和服务：注塑制造执行系统、电子装配制造执行系统、离散制造执行系统、自动排程系统、拉动式生产系统、敏捷供应链系统、智能仓储系统，企业的系统升级SAP（A1和B1）的方案集成和实施以及智能货架、自动装配线和多种自动化设备。

Service Information:

The overall solution of "smart factory" of Sprann covers the following areas: manufacturing system execution in injection moulding, electronic assembly lines, discrete, advanced planning and scheduling, pull production system, agile supply chain system, VDS system, smart warehouse system, enterprise resource planning system upgrading SAP (A1 and B1), solution integration and implementation, as well as intelligent shelves, automatic assembly lines and various automation equipment.



星科有限公司

Startec Limited



香港九龙长沙湾道889号华创中心1009室

Room 1009, CRE Center, 889 Cheung Sha Wan Road, Kowloon, Hong Kong

电话 Tel: +852 2745 6991

电邮 Email: ivanting@startec.com.hk

网址 Website: www.startec.com.hk

公司简介：

星科有限公司成立於1999年，公司早期致力於摩托车出口贸易。2007年，凭着近10年累积的专业知识和专业人才，本着打破外国技术壁垒，提高国产摩托车价值以及提升自身竞争力的目的，公司投入了摩托车电喷技术的研发。公司研发低门槛摩托车电喷技术的目标，即尽可能减少整车的改造，尽可能减少摩托车製造企业的开发费用压力。2010年，第一代电喷系统初步成功，在海內外的各项测试中，都取得了优异的成绩，並取得了关键部件的多项专利。自2010年起，公司投入针对欧四标准的系统研发，同时引入了香港生产力促进局作为强援。我们不断优化部件，使电喷系统更简单、更可靠、更切合用戶的使用习惯。我们不断完善控制策略，使其达到甚至超越国外走在前面的同行。

Company Introduction:

Startec Limited was founded in 1999. The company was committed to motorcycle export trade in the early days. In 2007, with nearly 10 years of accumulated professional experience and professionals. In order to surpass the barriers of foreign technology, improve the value of domestic motorcycles and enhance their own competitiveness, we have invested in the research and development of motorcycle EFI technology. Our goal is to develop low-threshold motorcycle EFI technology to minimize the transformation of the whole vehicle and reduce the development costs of motorcycle manufacturers as much as possible. In 2010, the first-generation EFI system was successful, and achieved excellent results in various tests locally and abroad, the system also obtained certification for key patents. Since 2010, the company has invested in system research and development for Euro IV standards, and at the same time worked with the Hong Kong Productivity Council as a strong supporting agent. We continue to optimize components to make the EFI system even simpler, more reliable, and more in line with user habits.



雅达模具设计制造有限公司



Ultratech Mold Design & Mfg., Co., Ltd.

香港九龙观塘骏业街41号日昇亚太中心7楼1室

Workshop 1, 7/F, Assun Pacific Centre, 41 Tsun Yip Street, Kwun Tong, Kowloon, Hong Kong

电话 Tel: +852 2304 1361

电邮 Email: sales@ultratech.com.hk

网址 Website: www.ultratech.com.hk



公司简介：

雅达模具设计製造有限公司於1985年在香港成立。致力於为电子、汽车、医疗、个人护理、包装等多个行业提供高精密零组件。公司导入ISO9001，ISO/TS16949，ISO13485认证，指导员工持续不断改善产品品质。

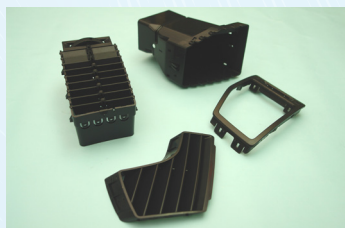
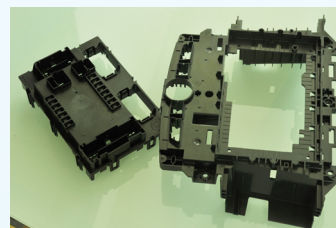
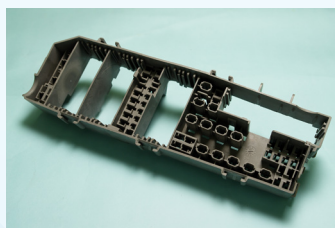
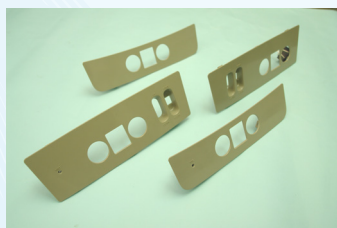
常用前期参与，产品设计评审，模流分析，前期质量策划，潜在失效模式分析等方法，与客户共同开发产品。我们应用生产件批准程序(PPAP)，科学注塑，制程控制(CPK)等方法，监控製程，保持及改进制程的稳定性。

雅达模具设计製造有限公司提供高精密多模腔制模，高精密注塑及部件组装服务。目前主要服务欧美及中国市场。

Company Introduction:

Ultratech established in Hong Kong in 1985, now has 3 factories in China, total 1000 employees. Ultratech specializes in high precision, multi-shot, unscrewing, encapsulation, high performance plastic mold making and molding, also provides sub-assembly services. Major market are in Europe, USA and China. The main products include interior adornment systems: instrumental panels, door trim, air system condition parts, video components; Safety systems: sensors, low voltage power connectors, housing and sub-assembled parts for ABS and ECU, auto motor encapsulation parts.

Ultratech is IATF16949 certified company, we follow APQP, PPAP practices, Control plans, PFMEA and SPC control the processes, make sure the quality stable.



Urban Mobility Solutions Limited

香港九龙观塘52号鸿图道12楼B室

Unit B, 12/F, 52 Hung To Road, Kwun Tong, Kowloon, Hong Kong

电话 Tel: +852 5190 9581

电邮 Email: iris.yeung@parkingguru.io

网址 Website: <https://parkingguru.io/>

公司简介：

我们是香港智能停车场管理解决方案的先驱，提供一系列先进的管理停车场技术和咨询服务，帮助各行业提高营运效率。

我们提供的智能方案包括：

- 泊车预约系统
- 自动车牌识别技术
- 电动车充电解决方案
- UWB泊车定位
- 停车场礼宾服务
- 车辆存库管理系统
- 其他客制化方案

Company Introduction:

We are a smart car park management solution pioneering provider in Hong Kong, providing a wide range of world leading parking technology and consultation services to enhance parking efficiency for various business sectors.

- Parking Reservation System
- Access Control System | Automatic License Plate Recognition
- Smart EV Charging Management Solution
- UWB Access Control
- Service Drive Concierge
- Inventory System
- Other Customized Solutions

服务简介：

泊车预约系统

透过手机遥距预留车位，省却在停车场外等候的时间；客人亦可预留充电设施，确保於到访时，把握时间为座驾充电。系统亦可提供其他增值服务，例如换领免费泊车、寻找泊车位置、启用「无感通行」泊车体验等。

自动车牌识别技术

自动车牌识别技术Automatic Number Plate Recognition (ANPR) 也称为LPR (License Plate Recognition) 是一种高度准确的系统，能够读取车辆资料，包括车牌、车辆型号和品牌。可用作交通管理、收费和停车管理服务，支持安全和高效率的运作。

电动车充电解决方案

充电解决方案整合自动车牌识别和支付系统，让企业透过云端系统中央管理 EV 充电站，例如存取实时充电站使用及收入数据，同时为驾驶者提供无缝的充电体验。

UWB泊车定位

UWB是一种高准确度的位置追踪无线电技术。凭藉高准确度的位置追踪，UWB技术可应用于停车导航、库存管理和位置性的客户服务，来改善用户体验並提高运营效率。

停车场礼宾服务

结合车位预约系统及车牌识别装置，系统可识别贵宾／客人的车牌並自动升起车闸，为客户提供「无感通行」泊车体验；同时相关人员亦可於系统存取客户资料以提供最佳的个人化服务。

车辆存库管理系统

一套完整的存库管理系统由车辆存库盘点、车辆定位至用途更新整合於云端，让企业告别低效工作，改进流程管理及提升营运效率。



备忘录

Memo

[illegible]

备忘录

Memo

This image shows a blank sheet of white paper with horizontal blue ruling lines. The lines are evenly spaced and extend across the width of the page. At the bottom of the page, there are decorative wavy patterns in shades of light blue and grey, which appear to be part of the paper's design or a background element. The overall appearance is that of a clean, unused piece of stationery.

备忘录

Memo

[illegible]





亚太智能网联汽车产业协会
Asia Pacific Connected Vehicles
Industry Association

香港九龙湾常悦道13号瑞兴中心707室
Room 707, Shui Hing Centre, 13 Sheung Yuet Road,
Kowloon Bay, Hong Kong
电话 Tel: +852 2541 1680
电邮 Email: stanley.ng@mapking.com



Hong Kong E-Vehicles Business General Association
香港電動車業總商會

香港电动车业总商会有限公司
Hong Kong E-Vehicles Business General
Association Limited

香港九龙湾启祥道9号信和工商中心地下2-5号
Unit 2-5, G/F, Sino Industrial Plaza, 9 Kai Cheung Road,
Kowloon Bay, Kowloon, Hong Kong
电话 Tel: +852 2833 0062
电邮 Email: info@hkev.com



香港生产力促进局
Hong Kong Productivity Council

香港九龙达之路78号香港生产力大厦
HKPC Building, 78 Tat Chee Avenue, Kowloon, Hong Kong
电话 Tel: +852 2788 5678
电邮 Email: hkpcenq@kpc.org